

# Serum B Vitamin Levels and Risk of Lung Cancer

Mattias Johansson, PhD; Caroline Relton, PhD; Per Magne Ueland, MD, PhD; Stein Emil Vollset, MD, DrPH; Øivind Midttun, PhD; Ottar Nygård, MD, PhD; Nadia Slimani, PhD; Paolo Boffetta, MD, PhD; Mazda Jenab, PhD; Françoise Clavel-Chapelon, PhD; Marie-Christine Boutron-Ruault, MD, PhD; Guy Fagherazzi, MSc; Rudolf Kaaks, PhD; Sabine Rohrmann, PhD; Heiner Boeing, PhD; Cornelia Weikert, MD, PhD; H. Bas Bueno-de-Mesquita, MD, MPH, PhD; Martine M. Ros, MSc; Carla H. van Gils, PhD; Petra H. M. Peeters, MD, PhD; Antonio Agudo, MD, MSc, PhD; Aurelio Barricarte, MD, PhD; Carmen Navarro, MD, MSc, PhD; Laudina Rodríguez, MD; Maria-José Sánchez, MD, PhD; Nerea Larrañaga, MD, MSc; Kay-Tee Khaw, FRCP; Nick Wareham, FRCP, PhD, MSc; Naomi E. Allen, PhD; Francesca Crowe, PhD; Valentina Gallo, MD, PhD; Teresa Norat, PhD; Vittorio Krogh, MD; Giovanna Masala, MD, PhD; Salvatore Panico, MD, MSc; Carlotta Sacerdote, MD, PhD; Rosario Tumino, MD, MSc; Antonia Trichopoulou, MD, PhD; Pagona Lagiou, MD, PhD; Dimitrios Trichopoulos, MD, PhD; Torgny Rasmussen, MD, PhD; Göran Hallmans, MD, PhD; Elio Riboli, MD, MPH, ScM; Paolo Vineis, MD, MPH, FFPH; Paul Brennan, PhD

**B** VITAMINS, INCLUDING B<sub>6</sub> AND FOLATE (B<sub>9</sub>), as well as related enzymes in the 1-carbon pathway, are essential for DNA synthesis and methylation. The 1-carbon metabolism process is complex and involves multiple interactions between B vitamins, homocysteine, and methionine, which in turn are required for generation of S-adenosylmethionine, an essential component of methylation reactions.<sup>1</sup> Deficiencies in B vitamins may increase the probability of DNA damage and subsequent gene mutations, and may influence gene expression via aberrant methylation patterns.<sup>2</sup> Given their involvement in maintaining DNA integrity and gene expression, these nutrients have a potentially important role in inhibiting cancer development, and offer the possibility of modifying cancer risk through dietary changes.

Major sources of 1-carbon nutrients and related vitamins are varied and include

**Context** B vitamins and factors related to 1-carbon metabolism help to maintain DNA integrity and regulate gene expression and may affect cancer risk.

**Objective** To investigate if 1-carbon metabolism factors are associated with onset of lung cancer.

**Design, Setting, and Participants** The European Prospective Investigation into Cancer and Nutrition (EPIC) recruited 519 978 participants from 10 countries between 1992 and 2000, of whom 385 747 donated blood. By 2006, 899 lung cancer cases were identified and 1770 control participants were individually matched by country, sex, date of birth, and date of blood collection. Serum levels were measured for 6 factors of 1-carbon metabolism and cotinine.

**Main Outcome Measure** Odds ratios (ORs) of lung cancer by serum levels of 4 B vitamins (B<sub>2</sub>, B<sub>6</sub>, folate [B<sub>9</sub>], and B<sub>12</sub>), methionine, and homocysteine.

**Results** Within the entire EPIC cohort, the age-standardized incidence rates of lung cancer (standardized to the world population, aged 35-79 years) were 6.6, 44.9, and 156.1 per 100 000 person-years among never, former, and current smokers for men, respectively. The corresponding incidence rates for women were 7.1, 23.9, and 100.9 per 100 000 person-years, respectively. After accounting for smoking, a lower risk for lung cancer was seen for elevated serum levels of B<sub>6</sub> (fourth vs first quartile OR, 0.44; 95% confidence interval [CI], 0.33-0.60; *P* for trend < .000001), as well as for serum methionine (fourth vs first quartile OR, 0.52; 95% CI, 0.39-0.69; *P* for trend < .000001). Similar and consistent decreases in risk were observed in never, former, and current smokers, indicating that results were not due to confounding by smoking. The magnitude of risk was also constant with increasing length of follow-up, indicating that the associations were not explained by preclinical disease. A lower risk was also seen for serum folate (fourth vs first quartile OR, 0.68; 95% CI, 0.51-0.90; *P* for trend = .001), although this was apparent only for former and current smokers. When participants were classified by median levels of serum methionine and B<sub>6</sub>, having above-median levels of both was associated with a lower lung cancer risk overall (OR, 0.41; 95% CI, 0.31-0.54), as well as separately among never (OR, 0.36; 95% CI, 0.18-0.72), former (OR, 0.51; 95% CI, 0.34-0.76), and current smokers (OR, 0.42; 95% CI, 0.27-0.65).

**Conclusion** Serum levels of vitamin B<sub>6</sub> and methionine were inversely associated with risk of lung cancer.

*JAMA.* 2010;303(23):2377-2385

www.jama.com

fruits and green leafy vegetables (folate), fortified cereals and whole grains (B<sub>6</sub>), as well as meat and dairy products (B<sub>12</sub>).<sup>3,4</sup> B vitamin levels are also likely to be influenced by genetic variants and other factors including alcohol consumption and low-grade inflammation.<sup>5-9</sup> Although many countries have initiated folic acid supplementation of flour and other food-types, deficiencies in nutrient levels of B vitamins have been shown to be high in many western populations.<sup>10</sup>

Until now, the main focus of studies of B vitamins and cancer prevention has been on folate and colorectal cancer. Two randomized trials of folate supplementation investigated whether it may prevent co-

lorectal adenomas among high-risk populations, but failed to identify a protective effect.<sup>11,12</sup> Although randomized trials may restrict confounding from other exposures, they have limitations in assessing the role of specific nutrients because (1) they are limited in size and the number of cancers that occur in the follow-up period; (2) supplementation is randomized over a relatively short period (several years); and (3) they are unrelated to life-long vitamin levels prior to the study.

**Author Affiliations** are available online at <http://www.jama.com>.

**Corresponding Author:** Paul Brennan, PhD, Genetic Epidemiology Group, International Agency for Research on Cancer, 150 cours Albert Thomas, F 69372 Lyon Cedex 08, France (Brennan@iarc.fr).

Alternatively, large population cohorts with baseline blood collection can compare vitamin serum levels with subsequent cancer development in large numbers. Validity of the results depends on several assumptions regarding the measurement of single serum markers at baseline including that they are (1) representative of past exposures, (2) not associated with underlying preclinical disease, and (3) not explained by other causes of the disease such as smoking. A potential role of B<sub>6</sub> in lung cancer has been reported from a randomized trial of  $\alpha$ -tocopherol and beta carotene (the ATBC study) in 29 000 male smokers in Finland.<sup>13</sup> Interpretation of this study is difficult due to the limited sample size, the absence of never smokers, and the possibility that smoking may suppress B<sub>6</sub> levels.

We therefore conducted a comprehensive investigation of B vitamins and methionine status based on serum samples from the the European Prospective Investigation into Cancer and Nutrition (EPIC) cohort study, a large population cohort of more than 500 000 adults conducted in 10 European countries.

## METHODS

### Study Cohort

EPIC recruitment procedures, collection of questionnaire data, anthropometric measurements, and blood samples have been described in detail elsewhere.<sup>14</sup> In brief, standardized questionnaire data on dietary and nondietary variables were collected between 1992 and 2000 from 519 978 individuals across Europe, of whom 385 747 provided a blood sample. The present study included individuals diagnosed with lung cancer after blood collection in the case group and matched participants in the control group from 8 of the 10 participating countries: France, Italy, Spain, United Kingdom, the Netherlands, Greece, Germany, and Sweden (excluding the Malmö center).

A blood sample was collected according to a standardized protocol. Filled syringes were kept at 5°C to 10°C, protected from light, and transferred to a local laboratory for further processing. Blood fractions (serum, citrate plasma, red cells, and buffy coat) were aliquoted into 0.5-mL

straws that were subsequently heat sealed and stored in liquid nitrogen tanks at the International Agency for Research on Cancer (IARC), Lyon, France, at -196°C, except in Umeå, Sweden, where samples were stored in 1.8-mL plastic tubes in -80°C freezers.

### Follow-up for Cancer Incidence

In Italy, the Netherlands, Spain, Sweden, and Great Britain, incident cancer cases were identified through record linkage with regional or national cancer registries. In France, Germany, and Greece, follow-up was based on a combination of methods, including health insurance records, cancer and pathology registries, and active follow-up through study participants and their next of kin. For each EPIC study center, closure dates of the study period were defined as the latest dates of complete follow-up for both cancer incidence and vital status (dates varied between centers, December 2002–December 2005). Vital status follow-up was more than 98% complete.

### Selection of Case and Control Group Participants

Among the 519 978 EPIC participants, 2206 were diagnosed with incident lung cancer by the end of the follow-up period for all centers. Individuals who did not donate a blood sample, had missing information on the date of blood donation, or had a history of another cancer (except nonmelanoma skin cancer) at the time of blood donation were excluded (n=614), leaving 1592 case participants. After further exclusions of Norway (n=15), Denmark (n=473), and the Malmö center in Sweden (n=202), serum samples (plasma in Umeå) were available for 899 case participants (3 did not have serum available). Data on histology were collected from each center where possible. Lung cancer cases were defined on the basis of the *International Classification of Diseases for Oncology, Second Edition*, and included all invasive cancers that were coded as C34.

For each case participant, 2 control participants were chosen at random from appropriate risk sets consisting of all cohort members alive and cancer free (except nonmelanoma skin cancer) at the time of

diagnosis of the index case. Matching criteria were country, sex, date of blood collection ( $\pm 1$  month, relaxed to  $\pm 5$  months for sets without available controls), and date of birth ( $\pm 1$  year, relaxed to  $\pm 5$  years for sets without available control participants). Two control participants were available for 873 in the case group, and 1 control participant was available for 24 in the case group, resulting in a matched sample size of 897 case and 1770 control participants. No control participants were available for 2 in the case group, and a further 47 control participants were included from 1 center (Umeå) without a matched case participant. These 49 control participants do not contribute to subsequent overall matched analyses, although they were retained in the data set and contribute to unmatched stratified analysis. All participants gave written informed consent to participate in the study and the research was approved by the local ethics committees in the participating countries and the IARC institutional review board.

### Biochemical Analyses

All biochemical analyses were performed at Bevital A/S (<http://www.bevital.no>), Bergen, Norway. The study included measurements of serum concentrations (plasma from Umeå) of B<sub>2</sub> (riboflavin), B<sub>6</sub> (measured as pyridoxal 5'-phosphate, its active form), folate (B<sub>9</sub>), B<sub>12</sub> (cobalamin), total homocysteine, and methionine. All case participants and all but 2 control participants were successfully analyzed. Along with pyridoxal 5'-phosphate, 2 other forms of B<sub>6</sub> were measured: pyridoxal, which is converted into pyridoxal 5'-phosphate, and pyridoxic acid, the catabolite of pyridoxal 5'-phosphate that is excreted in the urine. We also measured cotinine as an indicator of recent smoking behavior. Concentrations of B<sub>2</sub>, B<sub>6</sub>, homocysteine, methionine, and cotinine were determined by mass spectrometry-based methods (liquid chromatography coupled to tandem mass spectrometry; gas chromatography coupled to tandem mass spectrometry),<sup>15,16</sup> and microbiological methods were used to determine concentrations of folate (*Lactobacillus casei*)<sup>17,18</sup> and B<sub>12</sub> (*Lactobacillus leichmannii*).<sup>19</sup>

Samples were analyzed in batches of 86 and quality control included 6 calibration samples, 2 control samples, and 1 blank sample in each batch. Samples from case and control participants were kept at  $-80^{\circ}\text{C}$  and analyzed in random order. All staff in the Bevitall laboratory were blinded to the case-control status of the blood samples.

### Statistical Analyses

Age-standardized incidence rates per 100 000 person-years of lung cancer for the complete EPIC cohort of 519 978 individuals were calculated separately by sex and smoking status, and standardized to the world population aged 35 through 79 years.<sup>20</sup>

Overall risk analyses of lung cancer involved calculating quartiles of serum levels for each of the 4 B vitamins, as well as methionine and homocysteine, based on the distribution among control participants. The odds ratio (OR) and 95% confidence interval (CI) of lung cancer for participants in the second, third, and fourth quartile was calculated relative to the first quartile using conditional logistic regression, conditioning on individual case sets.

Additional adjustment was conducted for quartiles of cotinine level, which was considered to be the most accurate measure of smoking intensity at the time of blood collection. Including further smoking variables (smoking status, duration of smoking, average cigarettes smoked per day) did not alter the results notably. Additional adjustment was also conducted for body mass index (BMI [calculated as weight in kilograms divided by height in meters squared]), educational attainment, and alcohol consumption at the time of recruitment. Analyses were also conducted after stratifying for never, former, and current smokers using unconditional logistic regression adjusting for age at recruitment, sex, country, and in current smokers, quartiles of cotinine levels. The overall trend for each analyte (*P* for trend), as well as stratified analyses, were conducted by including the base 2 logarithm ( $\log_2$ ) of the analyte concentrations as a continuous variable in a separate logistic regression model. The OR trend estimate from this model may be interpreted as the rela-

tive risk associated with a doubling in concentrations. All analyses were also repeated after removing case participants diagnosed within 1 year of blood collection.

Prespecified stratified analyses were conducted for country, histology, smoking status (including time since quitting among former smokers), sex, time from blood draw to diagnosis, as well as educational attainment and alcohol intake at recruitment. We used  $\chi^2$  tests to examine heterogeneity in OR in stratified analyses. Dietary intake of major food groups, as well as B<sub>2</sub>, B<sub>6</sub>, and B<sub>12</sub>, were available as assessed by the EPIC food frequency questionnaires in each center. The association between lifestyle and dietary factors with serum levels were investigated using linear regression models, adjusting for case-control status, age, sex, and country, and further adjusted for cotinine when appropriate (in quartiles).

Cumulative risks of lung cancer were calculated up to the age of 79 years by estimating cumulative rates (the sum of age-specific incidence rates by sex and smoking status in 5-year categories) and applying a standard formula to convert these to cumulative risks.<sup>20</sup> These risks do not take into account competing causes of death. Similarly, cumulative risks by 1-carbon exposure categories were calculated by applying OR estimates and control exposure distributions on the cumulative rates.<sup>21</sup> These were calculated separately for men and women, and for never, former, and current smokers.

All *P* values were 2-sided and statistical analyses were conducted using SAS version 9.2 (Cary, North Carolina).

## RESULTS

### Incidence Rates of Lung Cancer Within the EPIC Cohort

Within the entire EPIC cohort of 519 978 individuals, the age-standardized incidence rates of lung cancer (standardized to the world population aged 35-79 years) were for men 6.6, 44.9, and 156.1 per 100 000 person-years among never, former, and current smokers, respectively. The corresponding incidence rates for women were 7.1, 23.9, and 100.9 per 100 000 person-years, respectively.

### Baseline Characteristics of Case and Control Participants

Among the 899 case and 1815 control participants within the nested case-control study, 11% of case participants were never smokers and 29% were former smokers at the time of recruitment, compared with 39% and 37% of control participants, respectively (TABLE 1). Among both case and control participants, 62% were men and their median age at blood draw was 59 years (95% range, 43-73 years). The median time between blood draw and diagnosis of lung cancer among the case participants was 62 months (Table 1). Serum levels of B<sub>2</sub>, B<sub>6</sub>, folate, B<sub>12</sub>, and methionine were similar between never and former smokers, although lower in current smokers (eTable 1 available at <http://www.jama.com>). Similarly, smoking intensity among current smokers (assessed by cotinine) was inversely associated with folate, B<sub>12</sub>, and B<sub>6</sub>.

### Serum Levels of B Vitamins and Lung Cancer Risk

Case and control participants were subsequently compared for quartiles of serum levels of each of the four B vitamins, as well as homocysteine and methionine (TABLE 2). After adjusting for matching variables and cotinine, a substantial lower risk for lung cancer was seen for increasing levels of B<sub>6</sub> (fourth vs first quartile OR, 0.44; 95% CI, 0.33-0.60; *P* for trend <.000001). A lower risk was also seen for increasing methionine (fourth vs first quartile OR, 0.52; 95% CI, 0.39-0.69; *P* for trend <.000001). Moderate decreases in risk were seen for the second quartile of both B<sub>6</sub> and methionine (second vs first quartile OR, 0.78 [95% CI, 0.60-1.01] and 0.88 [95% CI, 0.69-1.15], respectively), as well as for the third quartile (third vs first quartile OR, 0.53 [95% CI, 0.40-0.71] and 0.49 [95% CI, 0.36-0.65], respectively). Adjustment by additional variables including BMI, educational attainment, and alcohol consumption did not modify the results (Table 2), and neither did simultaneous adjustment of each analyte (Table 2). Excluding case participants who were diagnosed within 1 year after blood draw also provided very similar results (eTable 2).

**Table 1.** Baseline and Clinical Characteristics of Study Participants

Discrete Variables	No. (%) of Participants in Group	
	Case (n = 899)	Control (n = 1815)
<b>Participating countries</b>		
Great Britain	176 (20)	356 (20)
Germany	161 (18)	319 (18)
Italy	139 (15)	278 (15)
Spain	130 (14)	259 (14)
The Netherlands	121 (13)	242 (13)
Greece	90 (10)	186 (10)
Sweden	58 (6)	127 (7)
France	24 (3)	48 (3)
<b>Sex</b>		
Men	559 (62)	1126 (62)
Women	340 (38)	689 (38)
<b>Smoking status</b>		
Never smokers	96 (11)	707 (39)
Former smokers	260 (29)	663 (37)
Years since quitting <10	132 (52)	179 (28)
Years since quitting ≥10	120 (48)	462 (72)
Current smokers	529 (59)	413 (23)
Unknown	14 (2)	32 (2)
<b>Education</b>		
Primary school	460 (53)	787 (45)
Technical/professional school	193 (22)	386 (22)
Secondary school	110 (13)	241 (14)
Higher education <sup>a</sup>	97 (11)	320 (18)
<b>Body mass index<sup>b</sup></b>		
<20	40 (4)	42 (2)
≥20-<25	348 (39)	586 (32)
≥25-<30	383 (43)	873 (48)
≥30-<35	105 (12)	261 (14)
≥35	23 (3)	53 (3)
<b>Alcohol intake at recruitment</b>		
Never drinkers	34 (4)	88 (5)
Former drinkers	90 (10)	122 (7)
<5 g/d	268 (30)	574 (32)
≥5-<20 g/d	200 (22)	541 (30)
≥20 g/d	307 (34)	490 (27)
<b>Continuous variables, median (5th-95th percentile)</b>		
Age at blood draw, y	59 (43-73)	
<b>Serum levels for components of the 1-carbon metabolism</b>		
Vitamin B <sub>2</sub> , Riboflavin, nmol/L	17.1 (7.1-61.3)	19.7 (8.1-71.8)
Vitamin B <sub>6</sub> , Pyridoxal 5'-phosphate, nmol/L	31.6 (13.2-87.9)	40.3 (16.9-116)
Folate, nmol/L	12.2 (5.3-32.5)	14.4 (6.6-38.8)
Vitamin B <sub>12</sub> , cobalamin, pmol/L	350 (180-629)	343 (190-607)
Homocysteine, μmol/L	12.6 (8.1-23.3)	12.1 (8.0-20.4)
Methionine, μmol/L	27.4 (19.0-42.6)	29.2 (20.9-43.8)
<b>Clinical characteristics, case participants only</b>		
Age at diagnosis, median (range), y	64 (38-85)	
Months from blood draw to diagnosis, median (range)	62 (1-151)	
<b>Distribution of months from blood draw to diagnosis, No. (%)</b>		
1-35	232 (26)	
36-59	202 (22)	
60-83	223 (25)	
84-151	242 (27)	
<b>Histology, No. (%)</b>		
Small cell carcinoma	110 (12)	
Adenocarcinoma	272 (30)	
Large cell carcinoma	50 (6)	
Squamous cell carcinoma	200 (22)	
Other carcinoma	267 (30)	

SI conversion factors: To convert B<sub>2</sub> to μg/dL, divide by 26.6; B<sub>6</sub> to ng/mL, divide by 4.046; folate to ng/mL, divide by 2.266; B<sub>12</sub> to pg/mL, divide by 0.7378; and methionine, divide by 67.02.

<sup>a</sup>Indicates completion. Higher education includes a university degree.

<sup>b</sup>Body mass index is calculated as weight in kilograms divided by height in meters squared.

After stratifying by smoking status, similar and consistent decreases in risk were observed for never smokers, former smokers, and current smokers for both B<sub>6</sub> and methionine, indicating that results were not due to a smoking-associated artifact (Table 2). For example, among never smokers, *P* for trend was .004 for B<sub>6</sub>, and *P* for trend was .04 for methionine. A moderate lower risk was observed for increasing serum folate levels (fourth vs first quartile OR, 0.68; 95% CI, 0.51-0.90; *P* for trend = .001), although this association was restricted to former and current smokers, and was not apparent in never smokers (fourth vs first quartile OR, 0.84; 95% CI, 0.43-1.65; *P* for trend = .41). No significant trends in risk were observed overall for serum vitamin B<sub>2</sub> (*P* for trend = .11), B<sub>12</sub> (*P* for trend = .06), or homocysteine (*P* for trend = .78). Regarding the additional measures of serum vitamin B<sub>6</sub> that were available, a similar lower risk was observed for pyridoxal (fourth vs first quartile OR, 0.51; 95% CI, 0.38-0.69; *P* for trend < .0009), although not for pyridoxic acid (fourth vs first quartile OR, 0.83; 95% CI, 0.60-1.14; *P* for trend = .30). Simultaneous adjustment for B<sub>6</sub> (as measured by pyridoxal 5'-phosphate), pyridoxal, and pyridoxic acid resulted in an unchanged estimate for B<sub>6</sub> (fourth vs first quartile OR, 0.43; 95% CI, 0.28-0.66) and no association for pyridoxal and pyridoxic acid.

We explored further the association of all B vitamins and metabolites after stratifying on various effect modifiers and estimating the OR for log<sub>2</sub> of serum levels. This OR (OR<sub>log2</sub>) may be interpreted as the relative risk associated with a doubling of the exposure level. OR<sub>log2</sub> for B<sub>6</sub> overall was 0.74 (95% CI, 0.66-0.83; *P* for trend = 3 × 10<sup>-7</sup>; eFigure 1). This result was consistent when stratified by potential effect modifiers including country, histology, smoking status, and time from blood draw to diagnosis. Similarly, the OR<sub>log2</sub> for methionine overall was 0.51 (95% CI, 0.39-0.67; *P* for trend = 4 × 10<sup>-6</sup>) and was not modified after stratification by potential effect modifiers (eFigure 2). Additional stratified analyses were conducted for B<sub>2</sub>, folate, B<sub>12</sub>, and homocysteine, and no apparent effect modification was observed (eFigure 3,



eFigure 4, eFigure 5, eFigure 6). The lower risk for folate (OR<sub>I<sub>0</sub>2</sub>=0.80; 95% CI, 0.71-0.90) was mainly restricted to former smokers (OR<sub>I<sub>0</sub>2</sub>=0.78; 95% CI, 0.64-0.95) and current smokers (OR<sub>I<sub>0</sub>2</sub>=0.76; 95% CI, 0.63-0.92).

We further investigated the association of having a high level of B<sub>6</sub>, methionine, or both by classifying individuals based on whether they were above or below the median values of these markers as measured among control participants (defined as <40.3nmol/L

for B<sub>6</sub> and <29.2 μmol/L for methionine [FIGURE 1]). There were above-median values for both markers in 27% of control participants compared with only 14% of case participants (OR, 0.41; 95% CI, 0.31-0.54). Intermediate risks were obtained for participants who had low methionine but high B<sub>6</sub> levels (OR, 0.58; 95% CI, 0.45-0.75), as well as those who had high methionine and low B<sub>6</sub> levels (OR, 0.56; 95% CI, 0.44-0.71). The overall trend for having high levels of none, 1, or both measures was significant (P

for trend=3 × 10<sup>-12</sup>). When stratifying by smoking, similar results for both high B<sub>6</sub> and methionine were observed among never (OR, 0.36; 95% CI, 0.18-0.72), former (OR, 0.51; 95% CI, 0.34-0.76), and current smokers (OR, 0.42; 95% CI, 0.27-0.65). When case and control participants were further classified according to the median level of folate in control participants (14.4 nmol/L), having above-median levels for all 3 vitamins resulted in an OR of 0.32 (95% CI, 0.23-0.45; eFigure 7).

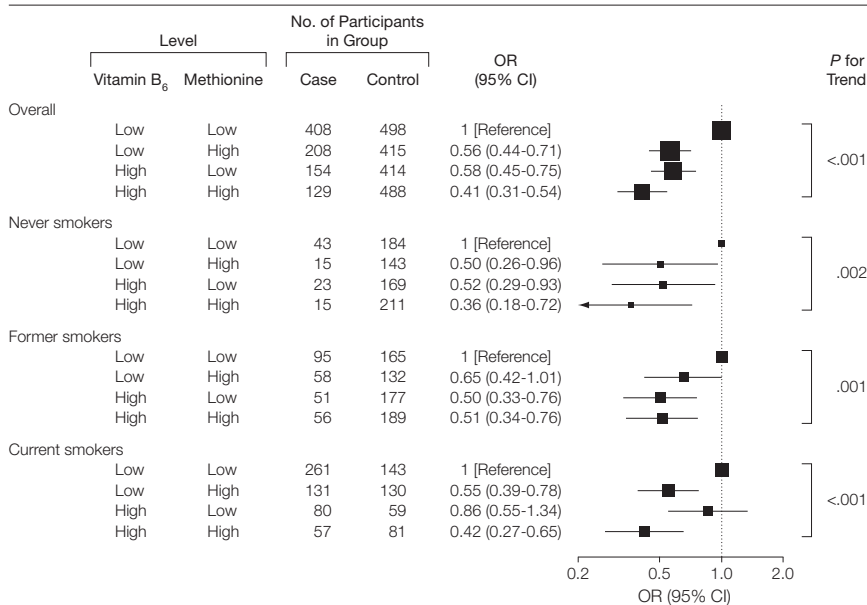
**Table 2.** Odds Ratios of Lung Cancer for Serum Levels of Vitamins B<sub>2</sub>, B<sub>6</sub>, Folate, B<sub>12</sub>, Homocysteine, and Methionine

Quartile (Range)	Case/Control Participants <sup>a</sup>	Odds Ratio (95% Confidence Interval)					
		Model 1 <sup>b</sup> (n = 897/1768) <sup>c</sup>	Model 2 <sup>d</sup> (n = 853/1621) <sup>c</sup>	Model 3 <sup>e</sup> (n = 892/1748) <sup>c</sup>	Never Smokers <sup>f</sup> (n = 96/707) <sup>g</sup>	Former Smokers <sup>f</sup> (n = 260/663) <sup>g</sup>	Current Smokers <sup>f,h</sup> (n = 529/413) <sup>g</sup>
<b>Vitamin B<sub>2</sub>, riboflavin, nmol/L</b>							
1 (2.9-13.3)	284/452	1 [Reference]	1 [Reference]	1 [Reference]	1 [Reference]	1 [Reference]	1 [Reference]
2 (13.4-19.7)	237/451	0.92 (0.71-1.21)	0.90 (0.68-1.18)	1.03 (0.77-1.36)	1.06 (0.53-2.14)	0.87 (0.57-1.35)	0.77 (0.54-1.09)
3 (19.8-29.9)	185/450	0.83 (0.62-1.11)	0.85 (0.63-1.13)	0.98 (0.72-1.32)	1.14 (0.58-2.23)	0.80 (0.51-1.25)	0.80 (0.53-1.23)
4 (30.0-1433)	188/452	0.82 (0.61-1.09)	0.85 (0.63-1.14)	0.99 (0.73-1.35)	0.96 (0.48-1.91)	0.94 (0.60-1.46)	0.91 (0.58-1.43)
P for trend <sup>i</sup>		.11	.22	.81	.38	.66	.46
<b>Vitamin B<sub>6</sub>, pyridoxal 5'-phosphate, nmol/L</b>							
1 (5.7-28.4)	380/452	1 [Reference]	1 [Reference]	1 [Reference]	1 [Reference]	1 [Reference]	1 [Reference]
2 (28.5-40.3)	231/451	0.78 (0.60-1.01)	0.76 (0.57-1.00)	0.83 (0.63-1.10)	0.76 (0.41-1.40)	0.78 (0.52-1.18)	0.68 (0.47-0.97)
3 (40.4-57.7)	152/450	0.53 (0.40-0.71)	0.54 (0.40-0.73)	0.59 (0.43-0.80)	0.57 (0.30-1.09)	0.51 (0.33-0.80)	0.64 (0.42-0.98)
4 (57.8-629)	131/452	0.44 (0.33-0.60)	0.43 (0.32-0.59)	0.50 (0.36-0.69)	0.37 (0.17-0.77)	0.50 (0.32-0.77)	0.67 (0.42-1.06)
P for trend <sup>i</sup>		2 × 10 <sup>-7</sup>	5 × 10 <sup>-7</sup>	2 × 10 <sup>-5</sup>	.004	.006	.04
<b>Folate, nmol/L</b>							
1 (0.1-10)	326/452	1 [Reference]	1 [Reference]	1 [Reference]	1 [Reference]	1 [Reference]	1 [Reference]
2 (10.1-14.4)	221/455	0.84 (0.64-1.10)	0.87 (0.66-1.15)	0.85 (0.64-1.12)	1.23 (0.64-2.36)	0.68 (0.44-1.05)	0.92 (0.64-1.32)
3 (14.5-22.4)	193/452	0.78 (0.59-1.03)	0.80 (0.60-1.07)	0.81 (0.60-1.10)	0.90 (0.47-1.75)	0.75 (0.49-1.15)	0.84 (0.56-1.26)
4 (22.5-395)	159/455	0.68 (0.51-0.90)	0.68 (0.50-0.91)	0.69 (0.50-0.95)	0.84 (0.43-1.65)	0.58 (0.37-0.91)	0.54 (0.34-0.83)
P for trend <sup>i</sup>		.001	.002	.008	.41	.02	.003
<b>Vitamin B<sub>12</sub>, cobalamin, pmol/L</b>							
1 (28.7-274)	227/453	1 [Reference]	1 [Reference]	1 [Reference]	1 [Reference]	1 [Reference]	1 [Reference]
2 (275-343)	199/454	0.94 (0.72-1.25)	0.97 (0.73-1.29)	0.95 (0.71-1.26)	1.00 (0.50-1.99)	0.86 (0.57-1.31)	0.92 (0.61-1.38)
3 (344-427)	240/454	1.29 (0.99-1.70)	1.33 (1.01-1.76)	1.32 (0.99-1.75)	0.78 (0.40-1.51)	1.26 (0.83-1.90)	1.49 (1.00-2.24)
4 (428-3800)	233/454	1.22 (0.92-1.62)	1.20 (0.90-1.59)	1.35 (1.00-1.82)	0.80 (0.41-1.54)	1.39 (0.92-2.11)	1.29 (0.84-1.98)
P for trend <sup>i</sup>		.06	.08	.04	.37	.05	.05
<b>Homocysteine, μmol/L</b>							
1 (4.9-10.3)	202/450	1 [Reference]	1 [Reference]	1 [Reference]	1 [Reference]	1 [Reference]	1 [Reference]
2 (10.4-12.1)	197/452	0.83 (0.62-1.12)	0.79 (0.59-1.06)	0.81 (0.60-1.10)	0.73 (0.41-1.31)	0.80 (0.50-1.27)	1.11 (0.71-1.74)
3 (12.2-14.5)	227/451	0.85 (0.63-1.15)	0.84 (0.62-1.15)	0.73 (0.53-1.01)	0.62 (0.32-1.19)	0.78 (0.49-1.24)	1.00 (0.64-1.57)
4 (14.6-139)	270/452	0.87 (0.64-1.17)	0.82 (0.60-1.12)	0.76 (0.54-1.07)	0.42 (0.19-0.90)	0.92 (0.58-1.46)	1.05 (0.67-1.66)
P for trend <sup>i</sup>		.78	.84	.62	.03	.71	.38
<b>Methionine, μmol/L</b>							
1 (11-25.3)	309/451	1 [Reference]	1 [Reference]	1 [Reference]	1 [Reference]	1 [Reference]	1 [Reference]
2 (25.4-29.1)	250/451	0.88 (0.68-1.15)	0.90 (0.69-1.18)	0.91 (0.69-1.18)	1.30 (0.73-2.30)	0.69 (0.46-1.03)	1.25 (0.84-1.87)
3 (29.2-33.9)	176/451	0.49 (0.36-0.65)	0.51 (0.38-0.69)	0.51 (0.38-0.69)	0.79 (0.41-1.52)	0.71 (0.46-1.10)	0.55 (0.36-0.81)
4 (34.0-69.2)	161/452	0.52 (0.39-0.69)	0.53 (0.40-0.72)	0.54 (0.40-0.73)	0.48 (0.22-1.04)	0.57 (0.37-0.88)	0.66 (0.43-1.01)
P for trend <sup>i</sup>		3 × 10 <sup>-7</sup>	2 × 10 <sup>-6</sup>	5 × 10 <sup>-6</sup>	.04	.005	.02

SI conversion factors: To convert B<sub>2</sub> to μg/dL, divide by 26.6; B<sub>6</sub> to ng/mL, divide by 4.046; folate to ng/mL, divide by 2.266; B<sub>12</sub> to pg/mL, divide by 0.7378; and methionine, divide by 67.02.

- <sup>a</sup>Numbers include all case and control participants for whom laboratory measurements were available, including those participants from uninformative case sets excluded from conditional analyses.
- <sup>b</sup>Assessed by conditional logistic regression conditioning on individual case set adjusting for cotinine (in quartiles).
- <sup>c</sup>Numbers (n=case/control participants) only include participants from informative case sets, ie, those from case sets with at least 1 case and 1 control participant.
- <sup>d</sup>Further adjusted for body mass index (in quartiles), educational attainment (in 5 groups), and alcohol intake at recruitment (in quartiles).
- <sup>e</sup>Adjusted for cotinine (in quartiles) and mutually adjusted for all the other analytes simultaneously (in quartiles).
- <sup>f</sup>Assessed by unconditional logistic regression adjusting for age (in 5-year categories), country, and sex.
- <sup>g</sup>Numbers (n=case/control participants) also include participants from uninformative case sets who were excluded from conditional analyses.
- <sup>h</sup>Further adjusted for cotinine (in quartiles).
- <sup>i</sup>P for trend assessed by the base 2 logarithm of the serum levels.

**Figure 1.** Odds Ratios of Lung Cancer for Groups of Serum Vitamin B<sub>6</sub> and Methionine Adjusted for Cotinine



High/low for vitamin B<sub>6</sub> denotes levels above/below 29.2 nmol/L, high/low for methionine denotes serum levels above/below 40.3 μmol/L. Odds ratios (ORs) were assessed by unconditional logistic regression adjusting for age (in 5-year categories), country, sex, and cotinine (in quartiles); P for trend was assessed by a discrete variable (0-2) indicating if 1 or 2 of the analytes are high; the black squares and horizontal lines indicate the ORs and 95% confidence intervals (CIs); the size of the black squares is proportional to the inverse variance of the logistic regression estimates.

**Dietary Intake of B Vitamins and Lung Cancer Risk**

Smokers consumed fewer fruits and vegetables than did never and former smokers (eTable 3). There were weak correlations between dietary vitamin measures and serum levels for B<sub>2</sub>, B<sub>6</sub>, and B<sub>12</sub> (eTable 4), consistent with observations in other studies.<sup>22-24</sup> In the comparison between serum B<sub>6</sub> and dietary B<sub>6</sub> as assessed from the food frequency questionnaires among the same group of case and control participants, while a decreasing risk was observed with increasing levels of serum B<sub>6</sub>, no association was observed with dietary B<sub>6</sub> either overall (P for trend = .81), or among the second (OR, 0.91), third (OR, 0.99), and fourth quartile (OR, 1.02; eTable 5). A potential increased risk was observed with increasing levels of dietary B<sub>12</sub> (P for trend = .007) that mirrored the nonsignificant increase observed for serum B<sub>12</sub> levels (P for trend = .06). No association was observed for dietary intake of B<sub>2</sub>, similar to the results for serum B<sub>2</sub> concentrations.

**Cumulative Risks of Lung Cancer**

Using the sex, smoking, and age-specific incidence rates within EPIC, we obtained cumulative risks of lung cancer (by age 79 years in the absence of other causes of death) among never, former, and current smokers of 0.50%, 3.4%, and 10.8% for men, and 0.47%, 1.6%, and 6.9% for women, respectively. Cumulative risks were subsequently calculated separately for participants with above-median and below-median serum levels of both B<sub>6</sub> and methionine (FIGURE 2). Among current smokers, cumulative risks ranged from 14.9% for men with above-median levels of both and 6.6% for men with below-median levels of both. The corresponding estimates for women were 8.9% and 3.8%, respectively. Cumulative risks among former-smoking men were 5.2% and 2.7%, respectively, and 2.5% and 1.3% among women, respectively. Among never-smoking men, cumulative risks were 0.90% and 0.32%, respectively, and 0.75% and 0.27% among women, respectively. Similar results were obtained for quartiles of B<sub>6</sub>,

folate, and methionine separately (eTable 6).

**COMMENT**

Our results suggest that above-median serum measures of both B<sub>6</sub> and methionine, assessed on average 5 years prior to disease onset, are associated with a reduction of at least 50% on the risk of developing lung cancer. An additional association for serum levels of folate was present, that when combined with B<sub>6</sub> and methionine, was associated with a two-thirds lower risk of lung cancer.

**Reverse Causation and Confounding by Smoking**

A noncausal explanation for the observed results is that of reverse causation, ie, underlying preclinical disease is suppressing serum levels of both B<sub>6</sub> and methionine. If this were the case, one would expect greater associations in the initial periods after blood collection, when preclinical disease might be most apparent. The OR for both serum B<sub>6</sub> and methionine were, however, very stable over the 12-year follow-up after blood collection, which would seem to exclude any possible reverse causation bias (eFigure 1; eFigure 2). As a further check against any possible reverse causation, we repeated analysis after excluding participants who developed lung cancer within 1 year of blood collection. Overall results for B<sub>6</sub> (P for trend < .000001) and methionine (P for trend = .00001) were almost identical to those including all cases (eTable 2).

A second possible noncausal explanation is that the results are confounded by cigarette smoking. Again, there are a number of reasons why this does not appear to be a plausible explanation of the results. First, when we compared various lifestyle exposures with serum levels among all participants, current smoking appeared to be associated with all serum measures, including those that were not subsequently associated with lung cancer (eTable 1). The strongest associated measures among current smokers were serum vitamin B<sub>6</sub> (concentration ratio [CR] compared with never smokers, 0.78; P < 10<sup>-15</sup>), B<sub>2</sub> (CR, 0.79; P < 10<sup>-11</sup>), homocysteine (CR, 1.09; P = 10<sup>-9</sup>), and folate

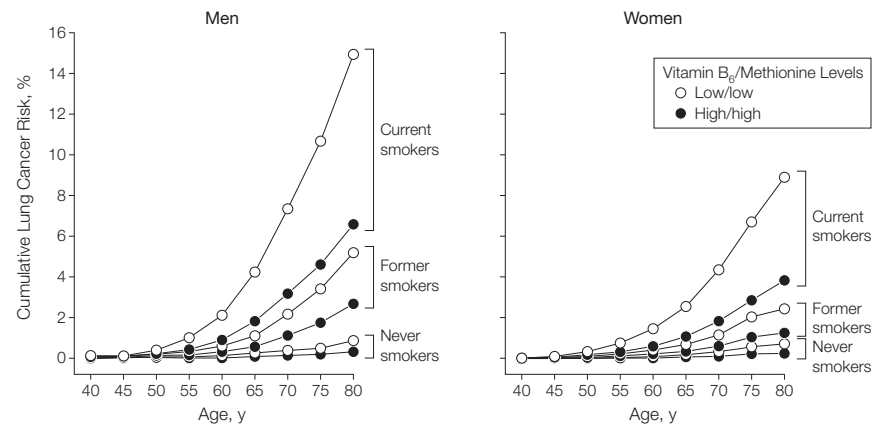
(CR, 0.86;  $P < 10^{-6}$ ). Serum vitamin B<sub>12</sub> measures were moderately suppressed (CR, 0.94;  $P = .001$ ), although the least-affected measure was for methionine (CR, 0.97;  $P = .01$ ). Second, former smoking did not appear to suppress any of the 6 serum measures, with average levels being very similar between former and never smokers (eg, CR=0.99 and 1.00 for B<sub>6</sub> and methionine, respectively). From these data, one might conclude that serum measures among former smokers are not confounded by smoking status, although serum measures among current smokers are. Similarly, when comparing dietary intake of major food groups across smoking categories, no differences between never and former smokers were observed, whereas current smokers consumed lower levels of both fruits and vegetables (eTable 3).

Third, an association among never smokers, as is apparent for both B<sub>6</sub> and methionine, would appear to rule out confounding by smoking as an explanation for the association with both. Smoking cannot therefore explain the association with never smokers, and is unlikely to explain the association among former smokers. Among current smokers, some confounding is plausible, although given that we have been able to adjust for cotinine, the most parsimonious explanation would seem to be that the results among never, former, and current smokers are roughly equivalent.

### Other Potential Confounders

An additional noncausal explanation is that the observed associations are confounded by other risk factors for lung cancer, including occupation or markers of social deprivation. Serum methionine appeared to be unrelated to most potential confounders for which information in the EPIC cohort was available including employment status, physical activity, BMI, and alcohol consumption (eTable 1). There was a small increase in serum methionine with higher educational attainment (CR, 1.01;  $P = .002$ ), although any further adjustment for this and BMI had no material effect on the overall OR (Table 2). Similarly, although base-

**Figure 2.** Cumulative Risks of Lung Cancer to Age 79 Years Among Never, Former, and Current Smokers



Cumulative risks up to age 79 were based on age-specific incidence rates estimated within the European Prospective Investigation into Cancer and Nutrition (EPIC) cohort, separately for men and women, and among never, former, and current smokers, combined with odds ratio estimates of lung cancer by median serum levels of B<sub>6</sub> and methionine. High/high indicates having above-median levels of both vitamin B<sub>6</sub> and methionine and low/low indicates having below-median levels.

line levels of serum vitamin B<sub>6</sub> were associated with educational attainment, physical activity, and with alcohol consumption, adjustment for these variables had no effect on the observed OR (Table 2). Given the absence of any apparent confounding effect from these exposures, residual confounding from poorly measured exposures would also appear to be unlikely. This leaves the possibility that other unidentified exposures for lung cancer (eg, specific occupational exposures), are strongly associated with both serum B<sub>6</sub> and methionine levels, and explain the observed results. Given their joint correlation was also limited ( $\rho = .17$ ; eTable 7), any unknown confounder of these associations would have to be strongly associated with both, as well as with lung cancer. We would therefore argue that, having excluded smoking, other potential confounders that explain these associations are unlikely.

### Independent and Combined Associations of Serum B<sub>6</sub>, Methionine, and Folate

Serum markers of B vitamins and related metabolites have been assessed for multiple cancer sites in prospective cohorts, including colorectal,<sup>25-30</sup> gastric,<sup>31</sup> pancreatic,<sup>32</sup> prostate,<sup>33,34</sup> and breast cancer.<sup>35-37</sup>

Studies of colorectal cancer and serum vitamin B<sub>6</sub> would seem to provide very consistent evidence of a protective association in the order of 50% lower risk when comparing the fourth quartile with the first quartile of the exposure distribution. Our results showing a lower risk of lung cancer with increasing serum vitamin B<sub>6</sub> status are therefore consistent with observed results from other large cohort studies for colorectal cancer, although evidence is limited for other cancer types. Previous studies on colorectal and other cancers have not investigated a potential role for serum methionine levels, and to our knowledge no previous studies have reported on the combined association of serum vitamin B<sub>6</sub>, folate, and methionine.

These epidemiological findings, as well as results from animal studies,<sup>38</sup> have led to the conduct of 2 large randomized studies aiming to test whether folate supplementation reduces the risk of colorectal cancer.<sup>11,12</sup> Neither study provided any positive evidence of a reduced risk of colorectal adenomas among participants randomized to receive folic acid supplementation, with some evidence in the US study of an increased risk of advanced or multiple adenomas. These results have led to the hypothesis that timing of folate supplementation may be essential, with folate being beneficial in primary prevention of

colorectal neoplasia, but potentially harmful in the presence of established cancer.<sup>39</sup> Similarly, it is also plausible that any effect with B<sub>6</sub> and methionine may be modified by stage of disease.

### Regression Dilution

Our serum B vitamin measurements were performed on a single blood sample obtained at study recruitment and as such are likely to be imperfect estimates of underlying historical exposure level. The correlation between our estimate and the underlying long-term level is likely to depend on a number of factors including day-to-day, seasonal, and more long-term variation within an individual. The consequence of this is that our estimated OR will be weaker than the true underlying association. It is possible, if one has multiple blood samples taken preferably many years apart, to correct for this “regression dilution.”<sup>40</sup> As an indication of the extent to which our OR estimates might be attenuated by regression dilution, we acquired repeat measurements taken 1 year apart for serum vitamin B<sub>6</sub>, methionine, and folate from the control group (n = 755) of the Western Norway B-vitamin Intervention Trial (WENBIT).<sup>41</sup> This resulted in corrected OR estimates for all 3 measures that were substantially lower than uncorrected measures, although particularly so for methionine (eTable 8). For example, comparing the fourth and first quartile of vitamin B<sub>6</sub>, the corrected OR was 0.25 for vitamin B<sub>6</sub>, 0.47 for folate, and 0.13 for methionine. Similar results were obtained for repeat measures taken 1 month and 3 years apart (eTable 8). Given that the combined OR of having above-median levels of all 3 measures was 0.32 (eFigure 7), these results indicate that the true underlying association is likely to be much stronger.

### Comparison of Food Frequency Questionnaires and Serum Measures

We observed no association between vitamin B<sub>6</sub> estimated from the food frequency questionnaires and lung cancer risk, in contrast to the strong protective association observed from serum levels (eTable 5). There are at least 2 possible interpretations for this discrepancy. One

is that serum measures are a far more accurate reflection of vitamin B<sub>6</sub> intake than estimates based on multiple food types determined by questionnaire. The correlation of 0.16 between the food frequency questionnaires and serum levels, similar to that observed in other studies,<sup>22-24</sup> would be in line with this. An alternative explanation is that serum levels of vitamin B<sub>6</sub> differ strongly between case and control participants not because of intake but because of absorption, distribution, or catabolism of the circulating nutrient. This will result in lower serum levels among the case participants even when intake is similar. An additional consequence would be that dietary modification would not be a suitable means for reducing cancer incidence. Assuming the associations with B<sub>6</sub> are causal, identifying which of these 2 explanations is true will be crucial.

### Public Health

Dietary sources of B<sub>6</sub> are varied and include beans, grains, meats, poultry, fish, and some fruits and vegetables, whereas primary sources of methionine are from animal proteins, as well as some nuts and vegetable seeds.<sup>3</sup> Given that serum levels of B vitamins and metabolites are at least partially determined by diet (eTable 4), and are clearly affected by vitamin supplements,<sup>41</sup> low vitamin levels are therefore modifiable. However, based on the recent experience of folate intervention trials for colorectal adenomas, as well as past intervention trials for lung cancer,<sup>11,12</sup> it is unlikely that further intervention trials of B vitamins would be advisable. A recent pooled analysis of 2 randomized trials reported a potential excess in risk for all cancers combined and lung cancer among participants randomized to receive folic acid and B<sub>12</sub>, with no apparent effect for B<sub>6</sub>.<sup>42</sup> These results would further support the hypothesis that randomization to B vitamins over several years does not provide any short-term benefits in cancer reduction, although do not inform about potential protective effects regarding maintaining adequate serum levels of B vitamins over the life course.<sup>43</sup>

If our observations regarding serum methionine, B<sub>6</sub>, or both are shown to be

causal, identifying optimum levels for reducing future cancer risk would appear to be appropriate. It is also possible that one may be able to obtain further evidence of potential causal effects, at least for B<sub>6</sub>, by analyzing modifier genes that have recently been identified from genome-wide studies of vitamin B serum levels.<sup>8</sup> Given the modest effect on serum levels associated with these gene variants, very large sample sizes will be required in order to obtain robust results.

Lung cancer remains the most common cause of cancer death in the world today and is likely to remain so for the near future.<sup>44</sup> It is essential that for lung cancer prevention, any additional evidence about causality does not detract from the importance of reducing the numbers of individuals who smoke tobacco. With this in mind, it is important to recognize that a large proportion of lung cancer cases occur among former smokers, making up the majority in countries where tobacco campaigns have been particularly successful, and a non-trivial number of lung cancer cases occur also among never smokers, particularly among women in parts of Asia.<sup>45-47</sup> Clarifying the role of B vitamins and related metabolites in lung cancer risk is likely therefore to be particularly relevant for former smokers and never smokers.

**Author Contributions:** Dr Brennan had full access to all of the data in the study and takes responsibility for the integrity of the data and the accuracy of the data analysis. **Study concept and design:** Relton, Vineis, Brennan. **Acquisition of data:** Relton, Ueland, Midtun, Nygård, Slimani, Boffetta, Jenab, Clavel-Chapelon, Boutron-Ruault, Fagherazzi, Kaaks, Rohrmann, Boeing, Weikert, Bueno-de-Mesquita, Ros, van Gils, Peeters, Agudo, Barricarte, Navarro, Rodríguez, Sánchez, Larrañaga, Khaw, Wareham, Allen, Crowe, Gallo, Norat, Krogh, Masala, Panico, Sacerdote, Tumino, Trichopoulos, Laggiou, Trichopoulos, Rasmuson, Hallmans, Riboli, Vineis, Brennan. **Analysis and interpretation of data:** Johansson, Relton, Ueland, Vollset, Midtun, Vineis, Brennan. **Drafting of the manuscript:** Johansson, Relton, Ueland, Vollset, Midtun, Vineis, Brennan. **Critical revision of the manuscript for important intellectual content:** Johansson, Relton, Ueland, Vollset, Midtun, Nygård, Slimani, Boffetta, Jenab, Clavel-Chapelon, Boutron-Ruault, Fagherazzi, Kaaks, Rohrmann, Boeing, Weikert, Bueno-de-Mesquita, Ros, van Gils, Peeters, Agudo, Barricarte, Navarro, Rodríguez, Sánchez, Larrañaga, Khaw, Wareham, Allen, Crowe, Gallo, Norat, Krogh, Masala, Panico, Sacerdote, Tumino, Trichopoulos, Laggiou, Trichopoulos, Rasmuson, Hallmans, Riboli, Vineis, Brennan. **Statistical analysis:** Johansson, Brennan. **Obtained funding:** Nygård, Slimani, Boffetta, Jenab, Clavel-Chapelon, Boutron-Ruault, Fagherazzi, Kaaks, Rohrmann, Boeing, Weikert, Bueno-de-Mesquita, Ros, van Gils, Peeters, Agudo, Barricarte, Navarro, Rodríguez, Sánchez,



Larrañaga, Khaw, Wareham, Allen, Crowe, Gallo, Norat, Krogh, Masala, Panico, Sacerdote, Tumino, Trichopoulos, Lagiou, Trichopoulos, Rasmuson, Hallmans, Riboli, Vineis, Brennan.

**Administrative, technical, or material support:** Slimani, Boffetta, Jenab, Clavel-Chapelon, Boutron-Ruault, Fagherazzi, Kaaks, Rohrmann, Boeing, Weikert, Bueno-de-Mesquita, Ros, van Gils, Peeters, Agudo, Barricarte, Navarro, Rodríguez, Sánchez, Larrañaga, Khaw, Wareham, Allen, Crowe, Gallo, Norat, Krogh, Masala, Panico, Sacerdote, Tumino, Trichopoulos, Lagiou, Trichopoulos, Rasmuson, Hallmans, Riboli, Vineis, Brennan.

**Study supervision:** Johansson, Relton, Ueland, Vollset, Middttun, Vineis, Brennan.

Drs Johansson and Relton both contributed equally to this article.

**Financial Disclosures:** Dr Ueland reports that he is a member of the steering board of the nonprofit Foundation to Promote Research Into Functional Vitamin B<sub>12</sub> Deficiency. No other disclosures were reported.

**Funding/Support:** World Cancer Research Fund (United Kingdom) funded the biochemical analyses for the study. The EPIC study has been supported by the Europe Against Cancer Program of the European Commission (SANCO); Deutsche Krebshilfe, Deutsches Krebsforschungszentrum, German Federal Ministry of Education and Research; Danish Cancer Society; Health Research Fund (FIS) of the Spanish Ministry of Health, Spanish Regional Governments of Andalucía, Asturias, Basque Country, Murcia and Navarra; the ISCIII Network RCEP (C03/09), Spain; the ISCIII of the Spanish Ministry of Health (RETICC DR06/0020); Cancer Research UK; Medical Research Council, United Kingdom; Greek Ministry of Health; Stavros Niarchos Foundation; Hellenic Health Foundation; Italian Association for Research on Cancer (AIRC); Italian National Research Council, Fondazione-Istituto Banco Napoli, Italy; Compagnia di San Paolo; Dutch Ministry of Public Health, Welfare and Sports; World Cancer Research Fund; Swedish Cancer Society; Swedish Scientific Council; Regional Government of Västerbotten, Sweden; Norwegian Cancer Society; Research Council of Norway; French League against Cancer (LNCC); National Institute for Health and Medical Research (INSERM), France; Mutuelle Générale de l'Éducation Nationale (MGÉN), France; 3M Co, France; Gustave Roussy Institute (IGR), France; and General Councils of France.

**Role of the Sponsor:** The funding organizations had no role in design and conduct of the study; collection, management, analysis, and interpretation of the data; and preparation, review, or approval of the manuscript.

**Additional Contributions:** Finally, we would like to thank Bertrand Hemon, AS, International Agency for Research on Cancer (IARC), Lyon, France, for calculating EPIC incidence rates; and Jonas Manjer, PhD, Department of Surgery, Malmö University Hospital, Malmö, Sweden, Eiliv Lund, PhD, Department of Community Medicine, University of Tromsø, Tromsø, Norway, Anne Tjønneland, PhD, Institute of Cancer Epidemiology, Danish Cancer Society, Copenhagen, Denmark, and Kim Overvad, PhD, Department of Clinical Epidemiology, Aarhus University Hospital, Aalborg, Denmark for contributing to EPIC lung cancer incidence rates.

**Online-Only Materials:** eTables 1-8 and eFigures 1-7 are available at <http://www.jama.com>.

## REFERENCES

- Kim YI. Folate and colorectal cancer. *Mol Nutr Food Res*. 2007;51(3):267-292.
- Das PM, Singal R. DNA methylation and cancer. *J Clin Oncol*. 2004;22(22):4632-4642.
- NIH Office of Dietary Supplements. Dietary Supplement Fact Sheets. [http://ods.od.nih.gov/Health\\_Information/Information\\_About\\_Individual\\_Dietary\\_Supplements.aspx](http://ods.od.nih.gov/Health_Information/Information_About_Individual_Dietary_Supplements.aspx). Accessed May 25, 2010.
- Olsen A, Halkjær J, van Gils CH, et al. Dietary intake of the water-soluble vitamins B<sub>1</sub>, B<sub>2</sub>, B<sub>6</sub>, B<sub>12</sub> and C in 10 countries in the European Prospective Investigation into Cancer and Nutrition. *Eur J Clin Nutr*. 2009;63(suppl 4):S122-S149.
- Lauffer EM, Hartman TJ, Baer DJ, et al. Effects of moderate alcohol consumption on folate and vitamin B<sub>12</sub> status in postmenopausal women. *Eur J Clin Nutr*. 2004;58(11):1518-1524.
- Gibson A, Woodside JV, Young IS, et al. Alcohol increases homocysteine and reduces B vitamin concentration in healthy male volunteers. *QJM*. 2008;101(11):881-887.
- Weisberg IS, Jacques PF, Selhub J, et al. The 1298A→C polymorphism in methylenetetrahydrofolate reductase (MTHFR). *Atherosclerosis*. 2001;156(2):409-415.
- Tanaka T, Scheet P, Giusti B, et al. Genome-wide association study of vitamin B<sub>6</sub>, vitamin B<sub>12</sub>, folate, and homocysteine blood concentrations. *Am J Hum Genet*. 2009;84(4):477-482.
- Dierkes J, Weikert C, Klipstein-Grobusch K, et al. Plasma pyridoxal-5-phosphate and future risk of myocardial infarction in the European Prospective Investigation into Cancer and Nutrition Potsdam cohort. *Am J Clin Nutr*. 2007;86(1):214-220.
- Ames BN, Wakimoto P. Are vitamin and mineral deficiencies a major cancer risk? *Nat Rev Cancer*. 2002;2(9):694-704.
- Cole BF, Baron JA, Sandler RS, et al. Polyp Prevention Study Group. Folic acid for the prevention of colorectal adenomas. *JAMA*. 2007;297(21):2351-2359.
- Logan RF, Grainge MJ, Shepherd VC, et al. Aspirin and folic acid for the prevention of recurrent colorectal adenomas. *Gastroenterology*. 2008;134(1):29-38.
- Hartman TJ, Woodson K, Stolzenberg-Solomon R, et al. Association of the B-vitamins pyridoxal 5'phosphate (B<sub>6</sub>), B<sub>12</sub>, and folate with lung cancer risk in older men. *Am J Epidemiol*. 2001;153(7):688-94.
- Riboli E, Hunt KJ, Slimani N, et al. European Prospective Investigation into Cancer and Nutrition (EPIC): study populations and data collection. *Public Health Nutr*. 2002;5(6B):1113-1124.
- Middttun Ø, Hustad S, Ueland PM. Quantitative profiling of biomarkers related to B-vitamin status, tryptophan metabolism and inflammation in human plasma by liquid chromatography/tandem mass spectrometry. *Rapid Commun Mass Spectrom*. 2009;23(9):1371-1379.
- Ueland PM, Middttun O, Windelberg A, et al. Quantitative profiling of folate and one-carbon metabolism in large-scale epidemiological studies by mass spectrometry. *Clin Chem Lab Med*. 2007;45(12):1737-1745.
- Molloy AM, Scott JM. Microbiological assay for serum, plasma, and red cell folate using cryopreserved, microtiter plate method. *Methods Enzymol*. 1997;281:43-53.
- Ueland P. Folate in serum. [http://folk.uib.no/mfapub/Pages/BV/BVSite/Pages/analyte\\_info/s\\_folate.html](http://folk.uib.no/mfapub/Pages/BV/BVSite/Pages/analyte_info/s_folate.html). Accessed December 1 2009.
- Kelleher BP, Broin SD. Microbiological assay for vitamin B<sub>12</sub> performed in 96-well microtiter plates. *J Clin Pathol*. 1991;44(7):592-595.
- Bray F. Chapter eight, age-standardization. In: Parkin DM, Whelan SL, Ferlay J, Teppo L, Thomas DB, eds. *Cancer Incidence in Five Continents Vol VIII*. Lyon, France: IARC Scientific Publications; 2002: No. 155.
- Peto R, Darby S, Deo H, et al. Smoking, smoking cessation, and lung cancer in the UK since 1950. *BMJ*. 2000;321(7257):323-329.
- Yoshino K, Nishide M, Inagawa M, et al. Validity of brief food frequency questionnaire for estimation of dietary intakes of folate, vitamins B<sub>6</sub> and B<sub>12</sub>, and their associations with plasma homocysteine concentrations. *Int J Food Sci Nutr*. 2010;61(1):61-67.
- Verkleij-Hagoort AC, de Vries JH, Stegers MP, et al. Validation of the assessment of folate and vitamin B<sub>12</sub> intake in women of reproductive age. *Eur J Clin Nutr*. 2007;61(5):610-615.
- Willett W. *Nutritional Epidemiology*. 2nd ed. New York, NY: Oxford University Press. 1998;124-127, 202-205.
- Dahlin AM, Van Guelpen B, Hultdin J, et al. Plasma vitamin B<sub>12</sub> concentrations and the risk of colorectal cancer. *Int J Cancer*. 2008;122(9):2057-2061.
- Wei EK, Giovannucci E, Selhub J, et al. Plasma vitamin B<sub>6</sub> and the risk of colorectal cancer and adenoma in women. *J Natl Cancer Inst*. 2005;97(9):684-692.
- Le Marchand L, White KK, Nomura AM, et al. Plasma levels of B vitamins and colorectal cancer risk. *Cancer Epidemiol Biomarkers Prev*. 2009;18(8):2195-2201.
- Lee JE, Li H, Giovannucci E, et al. Prospective study of plasma vitamin B<sub>6</sub> and risk of colorectal cancer in men. *Cancer Epidemiol Biomarkers Prev*. 2009;18(4):1197-1202.
- Figueiredo JC, Levine AJ, Grau MV, et al. Vitamins B<sub>2</sub>, B<sub>6</sub>, and B<sub>12</sub> and risk of new colorectal adenomas in a randomized trial of aspirin use and folic acid supplementation. *Cancer Epidemiol Biomarkers Prev*. 2008;17(8):2136-2145.
- Weinstein SJ, Albanes D, Selhub J, et al. One-carbon metabolism biomarkers and risk of colon and rectal cancers. *Cancer Epidemiol Biomarkers Prev*. 2008;17(11):3233-3240.
- Vollset SE, Igland J, Jenab M, et al. The association of gastric cancer risk with plasma folate, cobalamin, and methylenetetrahydrofolate reductase polymorphisms in the European Prospective Investigation into Cancer and Nutrition. *Cancer Epidemiol Biomarkers Prev*. 2007;16(11):2416-2424.
- Schernhammer E, Wolpin B, Rifai N, et al. Plasma folate, vitamin B<sub>6</sub>, vitamin B<sub>12</sub>, and homocysteine and pancreatic cancer risk in four large cohorts. *Cancer Res*. 2007;67(11):5553-5560.
- Johansson M, Van Guelpen B, Vollset SE, et al. One-carbon metabolism and prostate cancer risk. *Cancer Epidemiol Biomarkers Prev*. 2009;18(5):1538-1543.
- Johansson M, Appleby PN, Allen NE, et al. Circulating concentrations of folate and vitamin B<sub>12</sub> in relation to prostate cancer risk. *Cancer Epidemiol Biomarkers Prev*. 2008;17(2):279-285.
- Chou YC, Lee MS, Wu MH, et al. Plasma homocysteine as a metabolic risk factor for breast cancer. *Breast Cancer Res Treat*. 2007;101(2):199-205.
- Zhang SM, Willett WC, Selhub J, et al. Plasma folate, vitamin B<sub>6</sub>, vitamin B<sub>12</sub>, homocysteine, and risk of breast cancer. *J Natl Cancer Inst*. 2003;95(5):373-380.
- Lin J, Lee IM, Cook NR, et al. Plasma folate, vitamin B<sub>6</sub>, vitamin B<sub>12</sub>, and risk of breast cancer in women. *Am J Clin Nutr*. 2008;87(3):734-743.
- Kim YI. Role of folate in colon cancer development and progression. *J Nutr*. 2003;133(11)(suppl 1):3731s-3739s.
- Ulrich CM, Potter JD. Folate and cancer—timing is everything. *JAMA*. 2007;297(21):2408-2409.
- Clarke R, Shipley M, Lewington S, et al. Underestimation of risk associations due to regression dilution in long-term follow-up of prospective studies. *Am J Epidemiol*. 1999;150(4):341-353.
- Ebbing M, Bleie O, Ueland PM, et al. Mortality and cardiovascular events in patients treated with homocysteine-lowering B vitamins after coronary angiography. *JAMA*. 2008;300(7):795-804.
- Ebbing M, Bonna KH, Nygard O, et al. Cancer incidence and mortality after treatment with folic acid and vitamin B<sub>12</sub>. *JAMA*. 2009;302(19):2119-2126.
- Drake BF, Colditz GA. Assessing cancer prevention studies—a matter of time. *JAMA*. 2009;302(19):2152-2153.
- Parkin DM, Bray F, Ferlay J, et al. Global cancer statistics, 2002. *CA Cancer J Clin*. 2005;55(2):74-108.
- Amos CI, Wu X, Broderick P, et al. Genome-wide association scan of tag SNPs identifies a susceptibility locus for lung cancer at 15q25.1. *Nat Genet*. 2008;40(5):616-622.
- Sun S, Schiller JH, Gazdar AF. Lung cancer in never smokers—a different disease. *Nat Rev Cancer*. 2007;7(10):778-790.
- Rudin CM, Avila-Tang E, Samet JM, et al. Lung cancer in never smokers: a call to action. *Clin Cancer Res*. 2009;15(18):5622-5625.

## Supplementary Online Content

Johansson M, Relton C, Ueland PM, et al. Serum B Vitamin Levels and Risk of Lung Cancer. *JAMA*. 2010;303(23):2377-2385.

**eTable 1.** Linear Regression for Serum Vitamin B<sub>2</sub>, B<sub>6</sub>, Folate, B<sub>12</sub>, Homocysteine and Methionine in Relation to Lifestyle Factors

**eTable 2.** Linear Regression of Serum Vitamin B<sub>2</sub>, B<sub>6</sub>, Folate, B<sub>12</sub>, Homocysteine and Methionine in Relation to Nutrients and Food Groups as Assessed by Food Frequency Questionnaires in Controls

**eTable 3.** Odds Ratios of Lung Cancer for Dietary Intake of B Vitamins and Serum Levels of Vitamin B<sub>2</sub>, B<sub>6</sub> and B<sub>12</sub>

**eTable 4.** Odds Ratios of Lung Cancer for Serum Levels of Vitamin B<sub>2</sub>, B<sub>6</sub>, Folate, B<sub>12</sub>, Homocysteine and Methionine Excluding Cases That Were Diagnosed With Lung Cancer Less Than a Year After Blood Draw

**eTable 5.** Linear Regression of Dietary Intake of Major Food Groups as Assessed by Food Frequency Questionnaires in Relation to Smoking Status and Serum Cotinine Levels

**eTable 6.** Spearman Correlation Coefficients Between Serum Vitamin B<sub>2</sub>, B<sub>6</sub>, Folate, B<sub>12</sub>, Homocysteine and Methionine, Overall and Stratified by Case-Control Status

**eTable 7.** Odds Ratios of Lung Cancer for Quartiles of Serum Vitamin B<sub>6</sub>, Folate and Methionine Corrected for Regression Dilution Bias

**eTable 8.** Odds Ratios of Lung Cancer for Quartiles of Serum Vitamin B<sub>6</sub>, Folate and Methionine Corrected for Regression Dilution Bias

**eFigure 1.** Forest Plot Shows Stratified ORs of Lung Cancer for Log<sub>2</sub> of Serum Vitamin B<sub>6</sub> (Pyridoxal 5'-Phosphate) Adjusted for Cotinine

**eFigure 2.** Forest Plot Shows Stratified ORs of Lung Cancer for Log<sub>2</sub> of Serum Methionine Adjusted for Cotinine

**eFigure 3.** Forest Plot Shows Stratified ORs of Lung Cancer for Log<sub>2</sub> of Serum Vitamin B<sub>2</sub> (Riboflavin) Adjusted for Cotinine

**eFigure 4.** Forest Plot Shows Stratified ORs of Lung Cancer for Log<sub>2</sub> of Serum Folate Adjusted for Cotinine

**eFigure 5.** Forest Plot Shows Stratified ORs of Lung Cancer for Log<sub>2</sub> of Serum Vitamin B<sub>12</sub> (Cobalamin) Adjusted for Cotinine

**eFigure 6.** Forest Plot Shows Stratified ORs of Lung Cancer for Log<sub>2</sub> of Serum Homocysteine Adjusted for Cotinine

**eFigure 7.** Odds Ratios of Lung Cancer for Groups of Serum Vitamin B<sub>6</sub>, Methionine and Folate Adjusted for Cotinine

This supplementary material has been provided by the authors to give readers additional information about their work.

# eTables

*eTable 1.* Linear regression for serum vitamin B2, B6, folate, B12, homocysteine and methionine in relation to lifestyle factors.

Variable	n	ratio <sup>1</sup> (95% CI)	p	n	ratio <sup>1</sup> (95% CI)	p
<b>Serum folate</b>						
Never smokers	803	1.00 (reference)		803	1.00 (reference)	
Former smokers	923	1.04 (0.98 - 1.09)	0.19	923	0.97 (0.93 - 1.01)	0.12
Current smokers	941	0.86 (0.81 - 0.91)	2x10 <sup>-07</sup>	942	0.94 (0.90 - 0.97)	0.001
log2- cotinine	932	0.95 (0.93 - 0.97)	2x10 <sup>-05</sup>	932	0.98 (0.97 - 1.00)	0.04
Average cigarettes per day	2389	0.98 (0.96 - 1.00)	0.11	2389	0.99 (0.97 - 1.00)	0.10
<b>Following variables adjusted for cotinine (in quartiles)</b>						
Being married	2253	1.05 (1.01 - 1.09)	0.02	2253	1.01 (0.99 - 1.04)	0.34
Having employment <sup>2</sup>	2242	0.99 (0.94 - 1.05)	0.83	2242	1.00 (0.96 - 1.04)	0.94
Educational attainment <sup>3</sup>	2579	1.01 (0.99 - 1.03)	0.55	2579	0.99 (0.97 - 1.00)	0.06
Wais-to-hip ratio (quartiles)	2515	1.00 (0.97 - 1.03)	0.86	2515	1.00 (0.98 - 1.02)	0.89
Physical activity at work <sup>4</sup>	2567	1.01 (0.99 - 1.02)	0.46	2567	1.00 (0.99 - 1.02)	0.38
Total Physical activity <sup>5</sup>	2436	1.02 (0.99 - 1.05)	0.13	2436	1.00 (0.98 - 1.02)	0.82
Alcohol intake at recruitment (quartiles)	2678	1.05 (1.03 - 1.07)	1x10 <sup>-06</sup>	2678	0.99 (0.98 - 1.00)	0.20
Lifetime average alcohol intake per day (quartiles)	2323	1.03 (1.01 - 1.06)	0.007	2323	0.99 (0.97 - 1.00)	0.13
Energy intake (quartiles)	2678	1.01 (0.99 - 1.03)	0.20	2678	1.01 (0.99 - 1.02)	0.42
BMI in categories <sup>6</sup>	2699	0.96 (0.94 - 0.99)	0.002	2699	1.00 (0.98 - 1.02)	0.84
<b>Serum homocysteine</b>						
Never smokers	801	1.00 (reference)		801	1.00 (reference)	
Former smokers	917	1.01 (0.98 - 1.03)	0.68	917	0.94 (0.88 - 1.00)	0.07
Current smokers	937	1.09 (1.06 - 1.12)	1x10 <sup>-09</sup>	935	0.79 (0.74 - 0.84)	6x10 <sup>-12</sup>
log2- cotinine	932	1.02 (1.01 - 1.03)	0.001	932	0.99 (0.97 - 1.02)	0.61
Average cigarettes per day	2378	1.02 (1.01 - 1.03)	0.0006	2376	0.97 (0.95 - 0.99)	0.02
<b>Following variables adjusted for cotinine (in quartiles)</b>						
Being married	2253	1.00 (0.98 - 1.02)	0.90	2253	1.05 (1.01 - 1.10)	0.02
Having employment <sup>2</sup>	2242	0.98 (0.95 - 1.01)	0.14	2242	1.03 (0.97 - 1.10)	0.34
Educational attainment <sup>3</sup>	2579	1.00 (0.99 - 1.01)	0.90	2579	1.00 (0.98 - 1.03)	0.82
Wais-to-hip ratio (quartiles)	2515	0.99 (0.97 - 1.00)	0.16	2515	1.02 (0.99 - 1.06)	0.27
Physical activity at work <sup>4</sup>	2567	1.00 (0.99 - 1.01)	0.77	2567	1.00 (0.98 - 1.01)	0.78
Total Physical activity <sup>5</sup>	2436	0.99 (0.97 - 1.00)	0.06	2436	1.00 (0.97 - 1.04)	0.87
Alcohol intake at recruitment (quartiles)	2678	1.01 (1.00 - 1.02)	0.06	2678	0.97 (0.94 - 0.99)	0.003
Lifetime average alcohol intake per day (quartiles)	2323	1.01 (1.00 - 1.02)	0.05	2323	0.98 (0.96 - 1.01)	0.25
Energy intake (quartiles)	2678	0.99 (0.98 - 1.00)	0.10	2678	1.02 (1.00 - 1.04)	0.09
BMI in categories <sup>6</sup>	2699	1.01 (1.00 - 1.02)	0.15	2699	1.00 (0.97 - 1.04)	0.81
<b>Serum methionine</b>						
Never smokers	801	1.00 (reference)		801	1.00 (reference)	
Former smokers	917	1.00 (0.98 - 1.02)	0.95	917	0.99 (0.94 - 1.05)	0.84
Current smokers	937	0.97 (0.95 - 0.99)	0.01	935	0.78 (0.73 - 0.83)	4x10 <sup>-16</sup>
log2- cotinine	932	1.00 (0.99 - 1.01)	0.59	932	0.96 (0.94 - 0.98)	0.0005
Average cigarettes per day	2378	1.00 (0.99 - 1.01)	0.42	2376	0.95 (0.93 - 0.97)	6x10 <sup>-06</sup>
<b>Following variables adjusted for cotinine (in quartiles)</b>						
Being married	2253	1.00 (0.98 - 1.01)	0.73	2253	1.02 (0.98 - 1.06)	0.43
Having employment <sup>2</sup>	2242	1.00 (0.98 - 1.02)	0.90	2242	1.03 (0.97 - 1.09)	0.33
Educational attainment <sup>3</sup>	2579	1.01 (1.00 - 1.02)	0.002	2579	1.03 (1.01 - 1.06)	0.002
Wais-to-hip ratio (quartiles)	2515	1.00 (0.99 - 1.02)	0.46	2515	0.98 (0.95 - 1.01)	0.11
Physical activity at work <sup>4</sup>	2567	1.00 (0.99 - 1.00)	0.60	2567	0.99 (0.98 - 1.01)	0.23
Total Physical activity <sup>5</sup>	2436	0.99 (0.98 - 1.00)	0.14	2436	0.99 (0.96 - 1.02)	0.54
Alcohol intake at recruitment (quartiles)	2678	1.00 (0.99 - 1.01)	0.73	2678	1.08 (1.06 - 1.10)	8x10 <sup>-14</sup>
Lifetime average alcohol intake per day (quartiles)	2323	1.00 (0.99 - 1.01)	0.65	2323	1.04 (1.01 - 1.06)	0.002
Energy intake (quartiles)	2678	1.01 (1.00 - 1.01)	0.24	2678	1.00 (0.98 - 1.02)	0.72
BMI in categories <sup>6</sup>	2699	1.00 (0.99 - 1.01)	1.00	2699	0.95 (0.93 - 0.98)	0.0009

1) Ratios of serum concentrations were calculated as 2 raised to the power of the beta estimates from linear regression models with log2- serum concentrations as response. The linear regression models were adjusted for case-control status, age, sex and country, and as indicated further adjusted for cotinine (in quartiles) 2) coded 0/1 ~ unemployed / employed 3) coded 1/2/3/4 ~ Primary school completed / Technical/professional school / Secondary school / Longer education (incl. University deg.) 4) coded 1/2/3/4 ~ Sedentary occupation / Standing occupation / Manual work / Heavy manual work 5) coded 1/2/3/4 ~ inactive / moderately inactive / moderately active / active 6) coded 1/2/3/4/5 ~ BMI [kg/m<sup>2</sup>] <20 / 20-24.98 / 25-29.99 / 30-34.95 / >= 35

eTable 2. Odds ratios of lung cancer for serum levels of vitamin B2, B6, folate, B12, homocysteine and methionine excluding cases that were diagnosed with lung cancer less than a year after blood draw.

Analyte	Quartile (range)	n (cases/controls):		Overall <sup>1</sup>	Overall <sup>3</sup>	Overall <sup>4</sup>	Never smokers	Former smokers	Current smokers
		Cases <sup>6</sup>	Controls <sup>6</sup>	835/1646 <sup>2</sup>	828/1622 <sup>2</sup>	831/1628 <sup>2</sup>	92/626 <sup>5</sup>	242/615 <sup>5</sup>	493/379 <sup>5</sup>
				OR (95% CI) <sup>1</sup>	OR (95% CI) <sup>3</sup>	OR (95% CI) <sup>4</sup>	OR (95% CI) <sup>7</sup>	OR (95% CI) <sup>7</sup>	OR (95% CI) <sup>7,8</sup>
<b>Vitamin B2</b> (Riboflavin) [nmol/L]	I (2.9 - 13.3)	264	416	1.00 (reference)	1.00 (reference)	1.00 (reference)	1.00 (reference)	1.00 (reference)	1.00 (reference)
	II (13.3 - 19.7)	223	402	0.93 (0.70 - 1.23)	0.89 (0.67 - 1.19)	1.02 (0.76 - 1.36)	1.03 (0.50 - 2.12)	0.84 (0.53 - 1.32)	0.85 (0.59 - 1.22)
	III (19.7 - 29.9)	170	405	0.81 (0.60 - 1.10)	0.82 (0.60 - 1.11)	0.96 (0.71 - 1.32)	1.01 (0.50 - 2.04)	0.78 (0.49 - 1.23)	0.88 (0.56 - 1.37)
	IV (29.9 - 1433)	176	414	0.82 (0.61 - 1.10)	0.84 (0.62 - 1.14)	0.99 (0.72 - 1.36)	0.95 (0.47 - 1.93)	0.90 (0.57 - 1.41)	0.95 (0.59 - 1.53)
				$p_{trend} = 0.09$	$p_{trend} = 0.16$	$p_{trend} = 0.74$	$p_{trend} = 0.33$	$p_{trend} = 0.92$	$p_{trend} = 0.83$
<b>Vitamin B6</b> (Pyridoxal 5'-phosphate) [nmol/L]	I (5.7 - 28.4)	342	398	1.00 (reference)	1.00 (reference)	1.00 (reference)	1.00 (reference)	1.00 (reference)	1.00 (reference)
	II (28.4 - 40.3)	220	407	0.80 (0.61 - 1.05)	0.79 (0.60 - 1.06)	0.85 (0.64 - 1.13)	0.81 (0.43 - 1.53)	0.77 (0.50 - 1.18)	0.79 (0.54 - 1.14)
	III (40.3 - 57.7)	145	411	0.54 (0.40 - 0.73)	0.55 (0.40 - 0.75)	0.58 (0.43 - 0.80)	0.60 (0.31 - 1.18)	0.49 (0.31 - 0.78)	0.72 (0.46 - 1.12)
	IV (57.7 - 629)	126	421	0.44 (0.32 - 0.60)	0.44 (0.32 - 0.61)	0.49 (0.35 - 0.68)	0.35 (0.16 - 0.75)	0.48 (0.30 - 0.77)	0.73 (0.45 - 1.18)
				$p_{trend} = 3 \times 10^{-7}$	$p_{trend} = 2 \times 10^{-6}$	$p_{trend} = 2 \times 10^{-5}$	$p_{trend} = 0.002$	$p_{trend} = 0.005$	$p_{trend} = 0.25$
<b>Folate</b> [nmol/L]	I (0.1 - 10)	299	398	1.00 (reference)	1.00 (reference)	1.00 (reference)	1.00 (reference)	1.00 (reference)	1.00 (reference)
	II (10.1 - 14.4)	207	412	0.83 (0.63 - 1.10)	0.87 (0.66 - 1.16)	0.82 (0.61 - 1.09)	1.15 (0.59 - 2.23)	0.62 (0.39 - 0.98)	0.95 (0.65 - 1.39)
	III (14.4 - 22.4)	181	421	0.77 (0.57 - 1.03)	0.79 (0.58 - 1.06)	0.80 (0.58 - 1.09)	0.79 (0.40 - 1.56)	0.67 (0.43 - 1.05)	0.93 (0.61 - 1.42)
	IV (22.5 - 395)	150	415	0.69 (0.51 - 0.93)	0.70 (0.51 - 0.94)	0.70 (0.50 - 0.98)	0.67 (0.33 - 1.35)	0.54 (0.34 - 0.85)	0.65 (0.41 - 1.03)
				$p_{trend} = 0.005$	$p_{trend} = 0.005$	$p_{trend} = 0.02$	$p_{trend} = 0.20$	$p_{trend} = 0.02$	$p_{trend} = 0.03$
<b>Vitamin B12</b> (Cobalamin) [pmol/L]	I (28.7 - 274)	213	422	1.00 (reference)	1.00 (reference)	1.00 (reference)	1.00 (reference)	1.00 (reference)	1.00 (reference)
	II (275 - 343)	181	410	0.93 (0.70 - 1.24)	0.96 (0.71 - 1.29)	0.94 (0.70 - 1.27)	1.16 (0.58 - 2.34)	0.77 (0.49 - 1.19)	0.92 (0.61 - 1.41)
	III (343 - 427)	230	417	1.34 (1.01 - 1.77)	1.39 (1.04 - 1.85)	1.36 (1.01 - 1.81)	0.84 (0.42 - 1.65)	1.28 (0.83 - 1.95)	1.54 (1.02 - 2.33)
	IV (427 - 3800)	213	398	1.19 (0.89 - 1.58)	1.17 (0.87 - 1.57)	1.30 (0.95 - 1.76)	0.84 (0.43 - 1.64)	1.35 (0.88 - 2.08)	1.32 (0.85 - 2.06)
				$p_{trend} = 0.10$	$p_{trend} = 0.12$	$p_{trend} = 0.07$	$p_{trend} = 0.38$	$p_{trend} = 0.06$	$p_{trend} = 0.03$
<b>Homocysteine</b> [μmol/L]	I (4.9 - 10.3)	187	400	1.00 (reference)	1.00 (reference)	1.00 (reference)	1.00 (reference)	1.00 (reference)	1.00 (reference)
	II (10.3 - 12.1)	188	402	0.87 (0.64 - 1.17)	0.83 (0.61 - 1.12)	0.85 (0.62 - 1.16)	0.84 (0.46 - 1.52)	0.83 (0.51 - 1.33)	1.14 (0.71 - 1.82)
	III (12.1 - 14.5)	211	419	0.81 (0.59 - 1.10)	0.81 (0.59 - 1.11)	0.71 (0.51 - 0.98)	0.68 (0.35 - 1.34)	0.75 (0.47 - 1.22)	0.99 (0.62 - 1.58)
	IV (14.6 - 139)	249	416	0.86 (0.63 - 1.17)	0.82 (0.60 - 1.13)	0.76 (0.53 - 1.07)	0.49 (0.22 - 1.08)	0.95 (0.59 - 1.52)	0.98 (0.61 - 1.57)
				$p_{trend} = 0.88$	$p_{trend} = 0.91$	$p_{trend} = 0.61$	$p_{trend} = 0.12$	$p_{trend} = 0.82$	$p_{trend} = 0.58$
<b>Methionine</b> [μmol/L]	I (11 - 25.3)	280	401	1.00 (reference)	1.00 (reference)	1.00 (reference)	1.00 (reference)	1.00 (reference)	1.00 (reference)
	II (25.3 - 29.1)	232	412	0.92 (0.70 - 1.20)	0.95 (0.72 - 1.25)	0.95 (0.72 - 1.25)	1.28 (0.71 - 2.32)	0.69 (0.45 - 1.05)	1.28 (0.84 - 1.93)
	III (29.2 - 33.9)	169	406	0.53 (0.39 - 0.72)	0.56 (0.41 - 0.76)	0.56 (0.41 - 0.76)	0.86 (0.44 - 1.67)	0.76 (0.49 - 1.20)	0.57 (0.38 - 0.87)
	IV (33.9 - 69.2)	154	418	0.56 (0.42 - 0.76)	0.58 (0.43 - 0.79)	0.59 (0.43 - 0.80)	0.50 (0.23 - 1.08)	0.64 (0.41 - 0.99)	0.70 (0.45 - 1.09)
				$p_{trend} = 1 \times 10^{-5}$	$p_{trend} = 7 \times 10^{-5}$	$p_{trend} = 1 \times 10^{-4}$	$p_{trend} = 0.06$	$p_{trend} = 0.02$	$p_{trend} = 0.07$

1) Assessed by conditional logistic regression conditioning on individual case set adjusting for cotinine (in quartiles) 2) numbers only include subjects from informative case sets, i.e. subjects from case sets with at least one case and one control 3) further adjusted for BMI (in quartiles), educational attainment (in five groups), and alcohol intake at recruitment (in quartiles) 4) adjusted for cotinine (in quartiles) and mutually adjusted for all the other analytes simultaneously (in quartiles) 5) numbers also include subjects from uninformative case sets that were excluded from conditional analyses 6) numbers include all subjects for which laboratory measurements were available, including those subjects from uninformative case sets that were excluded from conditional analyses 7) Assessed by unconditional logistic regression adjusting for age (in five year categories), country and sex 8) further adjusted for cotinine (in quartiles) 9)  $p_{trend}$  assessed by the base 2 logarithm of the serum level



*eTable 3. Linear regression of dietary intake of major food groups as assessed by food frequency questionnaires in relation to smoking status and serum cotinine levels.*

Variable	Smoking status/ Quartile (range)	n	ratio (95% CI) <sup>1</sup>	p <sup>1</sup>	n	ratio (95% CI) <sup>1</sup>	p <sup>1</sup>
		<b>Vegetables</b>			<b>Dairy products</b>		
<b>Smoking status</b>	never smokers	801	1.00 (reference)		801	1.00 (reference)	
	former smokers	915	1.04 (0.98 - 1.11)	0.16	915	0.93 (0.85 - 1.02)	0.12
	current smokers	931	0.90 (0.85 - 0.96)	0.002	931	0.86 (0.78 - 0.95)	0.003
<b>Serum cotinine Quartiles among current smokers [nmol/L]</b>	I (0 - 797)	233	1.00 (reference)		233	1.00 (reference)	
	II (794 - 1256)	231	0.95 (0.84 - 1.07)	0.37	231	0.91 (0.76 - 1.1)	0.35
	III (1258 - 1666)	234	0.89 (0.79 - 1.01)	0.07	234	0.95 (0.78 - 1.14)	0.57
	IV (1667 - 4476)	233	0.82 (0.72 - 0.94)	0.004	233	0.89 (0.73 - 1.09)	0.27
		<b>Meat products</b>			<b>Fruits</b>		
<b>Smoking status</b>	never smokers	801	1.00 (reference)		801		
	former smokers	915	0.98 (0.91 - 1.06)	0.62	915	0.96 (0.89 - 1.05)	0.38
	current smokers	931	1.08 (0.99 - 1.17)	0.08	931	0.74 (0.67 - 0.81)	2x10 <sup>-11</sup>
<b>Serum cotinine Quartiles among current smokers [nmol/L]</b>	I (0 - 797)	233	1.00 (reference)		233	1.00 (reference)	
	II (794 - 1256)	231	1.07 (0.95 - 1.21)	0.25	231	0.79 (0.66 - 0.95)	0.01
	III (1258 - 1666)	234	1.03 (0.91 - 1.17)	0.6	234	0.74 (0.61 - 0.89)	0.001
	IV (1667 - 4476)	233	1.03 (0.90 - 1.17)	0.71	233	0.74 (0.61 - 0.90)	0.003
		<b>Leafy vegetables</b>			<b>Fruiting vegetables</b>		
<b>Smoking status</b>	never smokers	801	1.00 (reference)		801	1.00 (reference)	
	former smokers	915	1.02 (0.92 - 1.12)	0.77	915	1.07 (0.98 - 1.16)	0.11
	current smokers	931	0.89 (0.80 - 1.00)	0.04	931	0.87 (0.79 - 0.95)	0.001
<b>Serum cotinine Quartiles among current smokers [nmol/L]</b>	I (0 - 797)	233	1.00 (reference)		233	1.00 (reference)	
	II (794 - 1256)	231	0.93 (0.76 - 1.14)	0.48	231	1.07 (0.91 - 1.26)	0.43
	III (1258 - 1666)	234	0.84 (0.68 - 1.04)	0.11	234	0.88 (0.74 - 1.04)	0.13
	IV (1667 - 4476)	233	0.85 (0.68 - 1.07)	0.16	233	0.88 (0.74 - 1.06)	0.18
		<b>Root vegetables</b>			<b>Grain and pod vegetables</b>		
<b>Smoking status</b>	never smokers	801	1.00 (reference)		801	1.00 (reference)	
	former smokers	915	0.97 (0.87 - 1.08)	0.57	915	1.00 (0.88 - 1.14)	0.97
	current smokers	931	0.80 (0.71 - 0.90)	0.0002	931	1.00 (0.87 - 1.14)	0.98
<b>Serum cotinine Quartiles among current smokers [nmol/L]</b>	I (0 - 797)	233	1.00 (reference)		233	1.00 (reference)	
	II (794 - 1256)	231	0.88 (0.70 - 1.09)	0.24	231	1.01 (0.78 - 1.30)	0.97
	III (1258 - 1666)	234	0.84 (0.67 - 1.05)	0.12	234	0.97 (0.75 - 1.27)	0.84
	IV (1667 - 4476)	233	0.81 (0.64 - 1.03)	0.08	233	0.92 (0.69 - 1.22)	0.56

1) Ratios of dietary intake were calculated as 2 raised to the power of the beta estimates from linear regression models with the base 2 logarithm of dietary intake as response. Dummy variables for smoking status or quartiles of cotinine (quartile cut-off points defined among current smokers) were included as covariates in the linear regression models adjusting for, case-control status, age, sex and country.

*eTable 4. Linear regression of serum vitamin B2, B6, folate, B12, homocysteine and methionine in relation to nutrients and food groups as assessed by food frequency questionnaires in controls.*

Variable	n	ratio <sup>1</sup> (95% CI)	p	n	ratio <sup>1</sup> (95% CI)	p
			<b>Serum folate</b>			
Vitamin B2 intake (nutrient)	1794	1.10 (1.05 - 1.16)	0.0001	1794	1.09 (1.05 - 1.13)	3x10 <sup>-6</sup>
Vitamin B6 intake (nutrient)	1794	1.24 (1.17 - 1.31)	3x10 <sup>-12</sup>	1794	1.04 (1.00 - 1.09)	0.06
Vitamin B12 intake (nutrient)	1794	1.02 (0.99 - 1.06)	0.17	1794	1.09 (1.07 - 1.12) <sup>2</sup>	2x10 <sup>-12</sup>
Vegetables	1794	1.10 (1.07 - 1.13)	5x10 <sup>-10</sup>	1794	0.99 (0.97 - 1.01)	0.2
Dairy products	1791	0.99 (0.97 - 1.01)	0.29	1791	1.03 (1.02 - 1.04)	2x10 <sup>-5</sup>
Meat products	1793	0.98 (0.96 - 1.00)	0.02	1793	1.03 (1.02 - 1.05)	2x10 <sup>-5</sup>
Fruits	1781	1.07 (1.05 - 1.09)	6x10 <sup>-10</sup>	1781	1.01 (1.00 - 1.03)	0.18
Leafy vegetables	1739	1.04 (1.02 - 1.06)	2x10 <sup>-5</sup>	1739	1.00 (0.98 - 1.01)	0.51
Fruiting vegetables	1786	1.06 (1.04 - 1.09)	5x10 <sup>-9</sup>	1786	1.00 (0.98 - 1.01)	0.59
Root vegetables	1693	1.01 (0.99 - 1.03)	0.29	1693	1.00 (0.99 - 1.01)	0.99
Grain and pod vegetables	1517	1.00 (0.99 - 1.02)	0.87	1517	1.00 (0.98 - 1.01)	0.56
			<b>Serum homocysteine</b>			
Vitamin B2 intake (nutrient)	1794	0.96 (0.94 - 0.98)	0.002	1794	1.22 (1.15 - 1.29) <sup>2</sup>	2x10 <sup>-10</sup>
Vitamin B6 intake (nutrient)	1794	0.96 (0.93 - 0.99)	0.01	1794	1.14 (1.06 - 1.22)	0.0006
Vitamin B12 intake (nutrient)	1794	0.97 (0.96 - 0.99)	0.002	1794	1.07 (1.02 - 1.11)	0.002
Vegetables	1794	0.98 (0.97 - 1.00)	0.02	1794	1.06 (1.02 - 1.09)	0.002
Dairy products	1791	0.99 (0.98 - 1.00)	0.004	1791	1.07 (1.05 - 1.09)	9x10 <sup>-9</sup>
Meat products	1793	0.98 (0.97 - 0.99)	0.0005	1793	0.99 (0.96 - 1.02)	0.42
Fruits	1781	1.00 (0.98 - 1.01)	0.39	1781	1.02 (0.99 - 1.04)	0.23
Leafy vegetables	1739	0.99 (0.99 - 1.00)	0.16	1739	1.01 (0.99 - 1.04)	0.19
Fruiting vegetables	1786	0.99 (0.98 - 1.00)	0.08	1786	1.04 (1.01 - 1.06)	0.007
Root vegetables	1693	1.00 (0.99 - 1.01)	0.86	1693	1.01 (0.99 - 1.03)	0.35
Grain and pod vegetables	1517	1.00 (0.99 - 1.01)	0.53	1517	1.02 (1.00 - 1.04)	0.04
			<b>Serum methionine</b>			
Vitamin B2 intake (nutrient)	1794	1.03 (1.01 - 1.05)	0.01	1794	1.05 (1.00 - 1.11)	0.06
Vitamin B6 intake (nutrient)	1794	1.01 (0.99 - 1.04)	0.37	1794	1.15 (1.08 - 1.22) <sup>2</sup>	2x10 <sup>-5</sup>
Vitamin B12 intake (nutrient)	1794	1.00 (0.99 - 1.02)	0.72	1794	1.01 (0.97 - 1.04)	0.69
Vegetables	1794	1.00 (0.99 - 1.01)	0.76	1794	1.08 (1.05 - 1.12)	3x10 <sup>-7</sup>
Dairy products	1791	1.01 (1.00 - 1.02)	0.004	1791	1.00 (0.98 - 1.02)	0.71
Meat products	1793	0.99 (0.98 - 1.00)	0.18	1793	0.99 (0.97 - 1.01)	0.41
Fruits	1781	1.00 (0.99 - 1.01)	0.45	1781	1.06 (1.03 - 1.08)	4x10 <sup>-6</sup>
Leafy vegetables	1739	1.00 (1.00 - 1.01)	0.38	1739	1.04 (1.02 - 1.06)	1x10 <sup>-5</sup>
Fruiting vegetables	1786	1.00 (0.99 - 1.01)	0.52	1786	1.06 (1.04 - 1.09)	7x10 <sup>-8</sup>
Root vegetables	1693	0.99 (0.99 - 1.00)	0.04	1693	1.02 (1.00 - 1.04)	0.03
Grain and pod vegetables	1517	1.00 (0.99 - 1.01)	0.73	1517	1.00 (0.98 - 1.01)	0.78

1) Serum concentration ratios were calculated as 2 raised to the power of the beta estimates from linear regression models with the base 2 logarithm of serum concentrations as response. The base 2 logarithm of each nutrient or food group was included as covariate in the linear regression models adjusting for age, sex, country and cotinine (in quartiles). The concentration ratios can therefore be interpreted as the average relative change in serum levels that would be expected for a doubling in dietary intake. 2) the Spearman correlation coefficient for dietary and serum B2 was 0.22, 0.16 for B6, and 0.11 for B12.

*eTable 5. Odds ratios of lung cancer for dietary intake of B-vitamins and serum levels of vitamin B2, B6 and B12.*

Analyte	Quartile (range)	cases	controls	Overall - by dietary intake	Overall - by serum levels <sup>from table 2</sup>
				OR (95% CI) <sup>1</sup>	OR (95% CI) <sup>1</sup>
<b>Vitamin B2</b> (Riboflavin) [mg/day]	I (0.41 - 1.32)	276	521	1.00 (reference)	1.00 (reference)
	II (1.32 - 1.68)	211	481	0.91 (0.69 - 1.19)	0.92 (0.71 - 1.21)
	III (1.68 - 2.17)	193	419	0.93 (0.70 - 1.24)	0.83 (0.62 - 1.11)
	IV (2.17 - 11.78)	204	373	1.10 (0.81 - 1.49)	0.82 (0.61 - 1.09)
				$p_{trend}^2 = 0.50$	$p_{trend}^3 = 0.11$
<b>Vitamin B6</b> (Pyridoxal 5'-phosphate) [mg/day]	I (0.39 - 1.51)	256	468	1.00 (reference)	1.00 (reference)
	II (1.51 - 1.88)	199	447	0.91 (0.68 - 1.21)	0.78 (0.60 - 1.01)
	III (1.88 - 2.37)	199	411	0.99 (0.73 - 1.33)	0.53 (0.40 - 0.71)
	IV (2.37 - 7.04)	230	468	1.02 (0.74 - 1.40)	0.44 (0.33 - 0.60)
				$p_{trend}^2 = 0.81$	$p_{trend}^3 = 2 \times 10^{-7}$
<b>Vitamin B12</b> (Cobalamin) [ug/day]	I (0.09 - 3.88)	237	562	1.00 (reference)	1.00 (reference)
	II (3.88 - 5.64)	248	496	1.23 (0.94 - 1.61)	0.94 (0.72 - 1.25)
	III (5.64 - 7.86)	190	404	1.18 (0.87 - 1.59)	1.29 (0.99 - 1.70)
	IV (7.87 - 69.82)	209	332	1.58 (1.16 - 2.15)	1.22 (0.92 - 1.62)
				$p_{trend}^2 = 0.007$	$p_{trend}^3 = 0.06$

1) Assessed by conditional logistic regression conditioning on individual case set and adjusting for cotinine (in quartiles) 2)  $p_{trend}$  assessed by the base 2 logarithm of the intake or serum vitamin level

*eTable 6. Cumulative risks<sup>1</sup> of lung cancer up to age 79 among never, former and current smokers, stratified by gender and quartiles of serum vitamin B6, folate, and methionine.*

Quartile (range)	Never smokers		Former smokers		Current smokers		
	Men	Women	Men	Women	Men	Women	
	Cumulative risks <sup>1</sup>		Cumulative risks <sup>1</sup>		Cumulative risks <sup>1</sup>		
<b>Vitamin B6</b> (Pyridoxal 5'-phosphate) [nmol/L]							
I	(5.7 - 28.4)	0.80%	0.69%	5.0%	2.4%	13.5%	8.6%
II	(28.4 - 40.3)	0.61%	0.53%	3.9%	1.9%	9.4%	5.9%
III	(40.3 - 57.7)	0.46%	0.39%	2.6%	1.3%	8.8%	5.6%
IV	(57.7 - 629)	0.30%	0.26%	2.5%	1.2%	9.2%	5.9%
<b>Folate</b> [nmol/L]							
I	(0.1 - 10)	0.51%	0.47%	4.7%	2.2%	12.5%	7.9%
II	(10.1 - 14.4)	0.63%	0.58%	3.2%	1.5%	11.5%	7.3%
III	(14.4 - 22.4)	0.46%	0.43%	3.5%	1.6%	10.6%	6.7%
IV	(22.5 - 395)	0.43%	0.40%	2.7%	1.3%	6.9%	4.4%
<b>Methionine</b> [μmol/L]							
I	(11 - 25.3)	0.59%	0.51%	4.7%	2.1%	12.9%	7.7%
II	(25.3 - 29.1)	0.76%	0.66%	3.3%	1.5%	15.8%	9.6%
III	(29.2 - 33.9)	0.47%	0.40%	3.4%	1.5%	7.3%	4.3%
IV	(33.9 - 69.2)	0.28%	0.25%	2.7%	1.2%	8.7%	5.2%

*1) Cumulative risks up to age 79 were based on age specific incidence rates estimated within the EPIC cohort, separately for men and women, and among never, former and current smokers, combined with odds ratio estimates of lung cancer by quartiles of serum vitamin B6, folate, and methionine*



*eTable 7. Spearman correlation coefficients between serum vitamin B2, B6, folate, B12, homocysteine and methionine, overall and stratified by case-control status.*

<b>Overall</b>					
	Vitamin B2	Vitamin B6	Folate	Vitamin B12	Homocysteine
Vitamin B6	0.25*				
Folate	0.26*	0.36*			
Vitamin B12	0.17*	0.08*	0.09*		
Homocysteine	-0.04	-0.12*	-0.31*	-0.29*	
Methionine	0.12*	0.17*	0.00	0.00	0.11*
<b>Controls</b>					
	Vitamin B2	Vitamin B6	Folate	Vitamin B12	Homocysteine
Vitamin B6	0.25*				
Folate	0.26*	0.32*			
Vitamin B12	0.19*	0.10*	0.11*		
Homocysteine	-0.04	-0.09*	-0.28*	-0.30*	
Methionine	0.10*	0.13*	-0.01	0.01	0.14*
<b>Cases</b>					
	Vitamin B2	Vitamin B6	Folate	Vitamin B12	Homocysteine
Vitamin B6	0.22*				
Folate	0.24*	0.37*			
Vitamin B12	0.13	0.06	0.07		
Homocysteine	-0.02	-0.13*	-0.36*	-0.28*	
Methionine	0.13	0.18*	-0.03	0.00	0.10

\*) *P*-value <0.0001

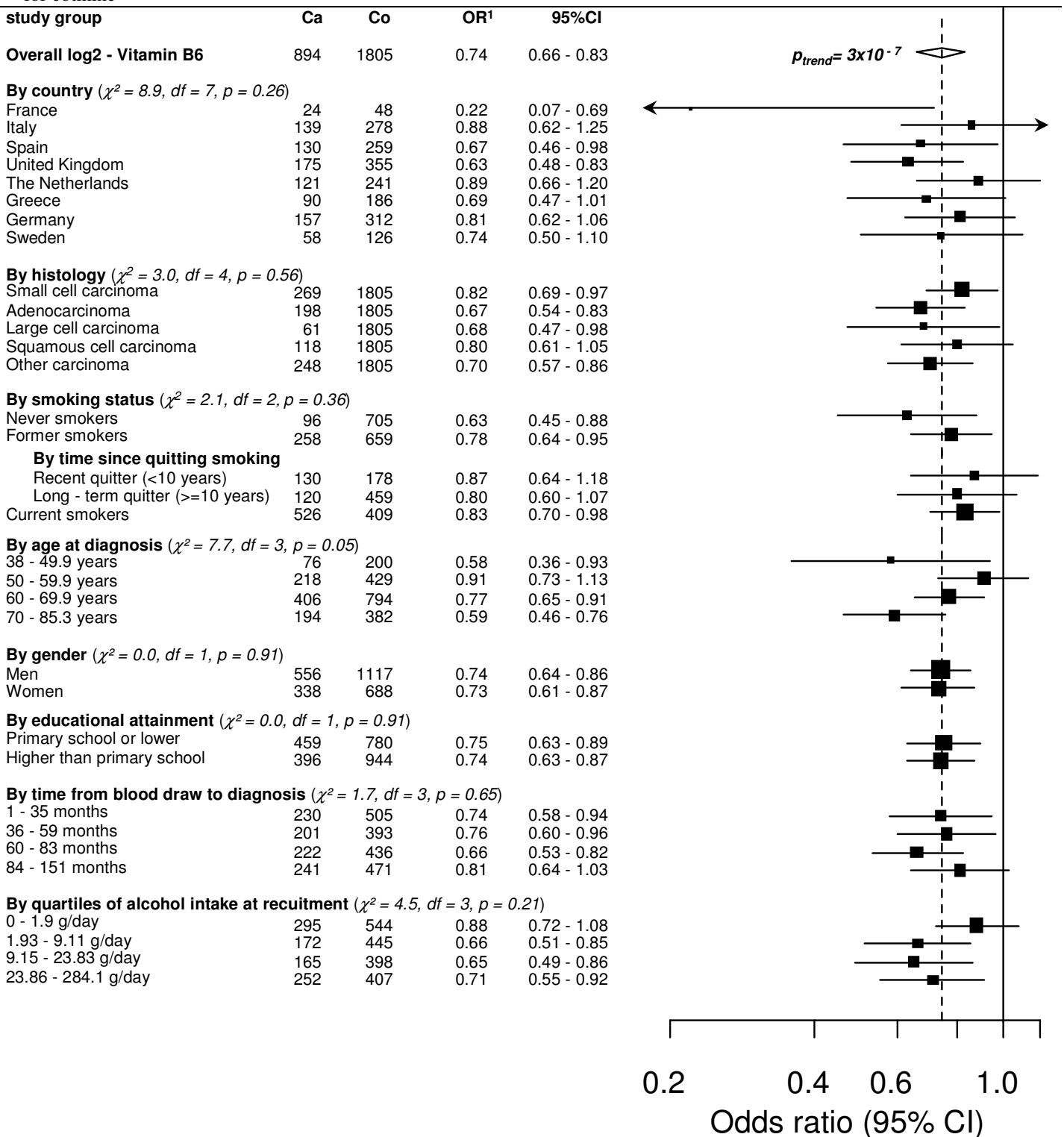
*eTable 8. Odds ratios of lung cancer for quartiles of serum vitamin B6, folate and methionine corrected for regression dilution bias.*

Analyte	Quartile	Cases	Controls	Not corrected	Corrected <sup>2</sup>		
				OR <sup>1</sup>	OR <sup>2,i</sup>	OR <sup>2,ii</sup>	OR <sup>2,iii</sup>
Vitamin B6 (Pyridoxal 5'-phosphate)	I	380	452	1.00 (reference)	1.00 (reference)	1.00 (reference)	1.00 (reference)
	II	231	451	0.78	0.7	0.66	0.62
	III	152	450	0.53	0.4	0.35	0.3
	IV	131	452	0.44	0.3	0.25	0.21
Folate	I	326	452	1.00 (reference)	1.00 (reference)	1.00 (reference)	1.00 (reference)
	II	221	455	0.84	0.77	0.71	0.68
	III	193	452	0.78	0.69	0.62	0.57
	IV	159	455	0.68	0.57	0.47	0.42
Methionine	I	309	451	1.00 (reference)	1.00 (reference)	1.00 (reference)	1.00 (reference)
	II	250	451	0.88	0.68	0.67	0.66
	III	176	451	0.49	0.11	0.11	0.09
	IV	161	452	0.52	0.14	0.13	0.12

1) Assessed by conditional logistic regression conditioning on individual case set adjusting for cotinine (in quartiles, see table 2) 2) ORs were corrected by dividing the regression estimate for each odds ratio with the regression dilution ratio (RDR) estimated using the non-parametric method suggested by Clarke et al. 1999. The RDR was calculated between measures of vitamin B6, folate and methionine concentrations for blood drawn at inclusion and repeated measures for blood drawn approximately i) 28 days after inclusion ( $RDR_{B6}=0.69$ ,  $RDR_{folate}=0.68$ ,  $RDR_{methionine}=0.33$ ), ii) 365 days after inclusion ( $RDR_{B6}=0.60$ ,  $RDR_{folate}=0.51$ ,  $RDR_{methionine}=0.33$ ), and iii) 999 days after inclusion ( $RDR_{B6}=0.52$ ,  $RDR_{folate}=0.45$ ,  $RDR_{methionine}=0.30$ )

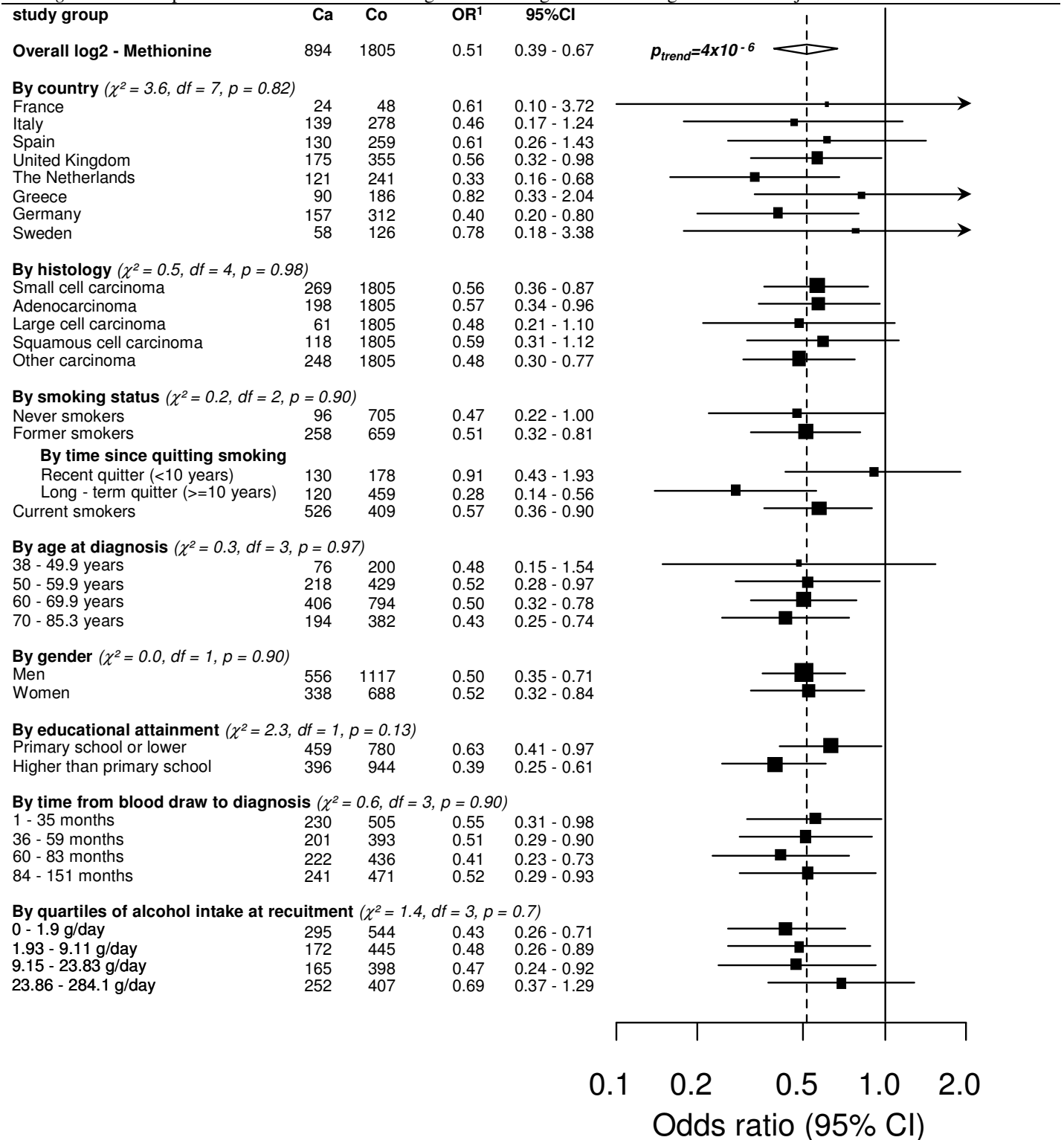
## eFigures

eFigure 1. Forest plot shows stratified ORs of lung cancer for log<sub>2</sub>- of circulating vitamin B6 (pyridoxal 5'-phosphate) adjusted for cotinine



1) ORs were assessed by unconditional logistic regression, adjusted for age, sex, country and cotinine (in quartiles); the black squares and horizontal lines indicate the ORs and 95% CIs; the size of the black squares are proportional to the inverse variance of the logistic regression estimates

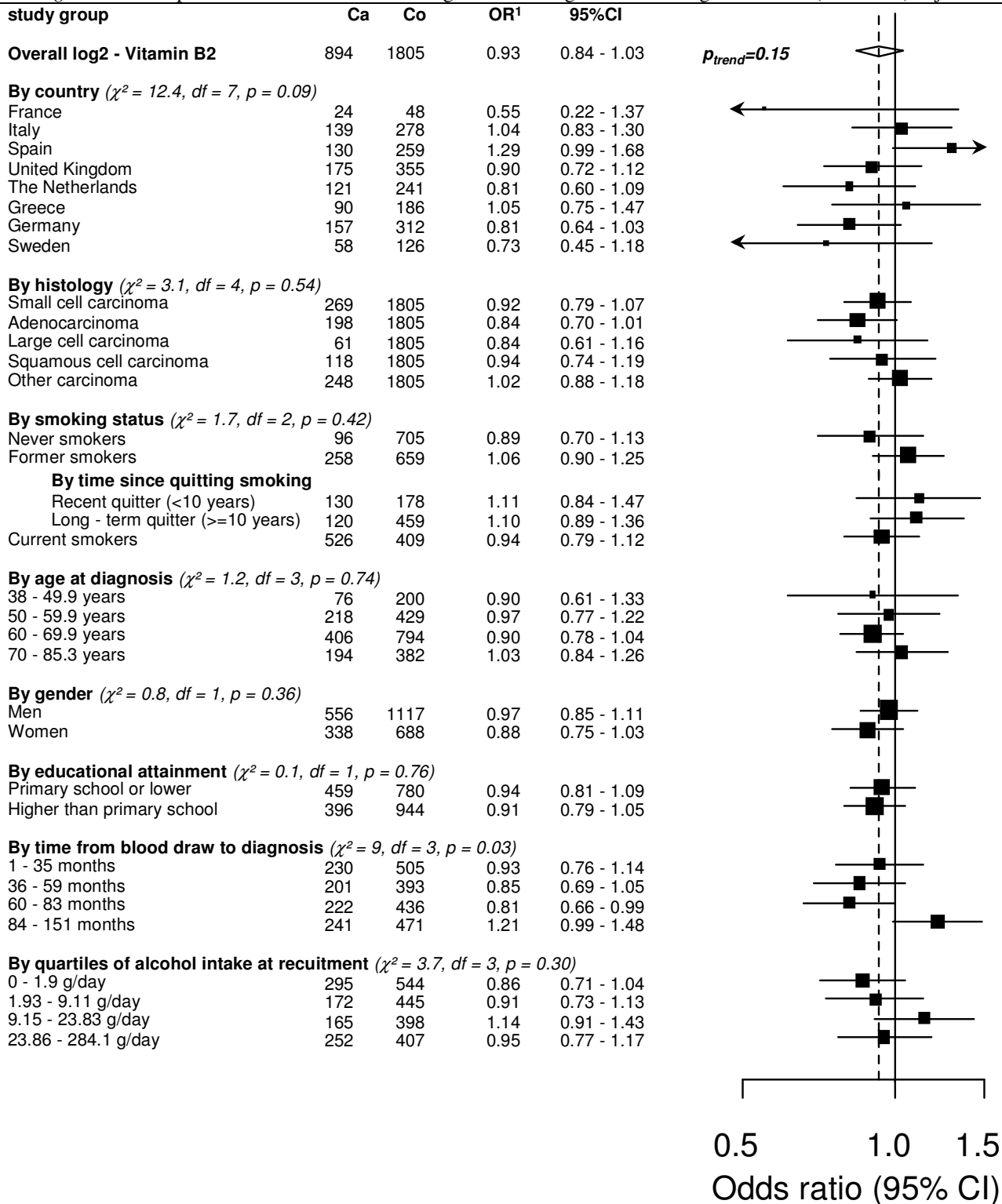
eFigure 2. Forest plot shows stratified ORs of lung cancer for log2- of circulating methionine adjusted for cotinine



1) ORs were assessed by unconditional logistic regression, adjusted for age, sex, country and cotinine (in quartiles); the black squares and horizontal lines indicate the ORs and 95% CIs; the size of the black squares are proportional to the inverse variance of the logistic regression estimates

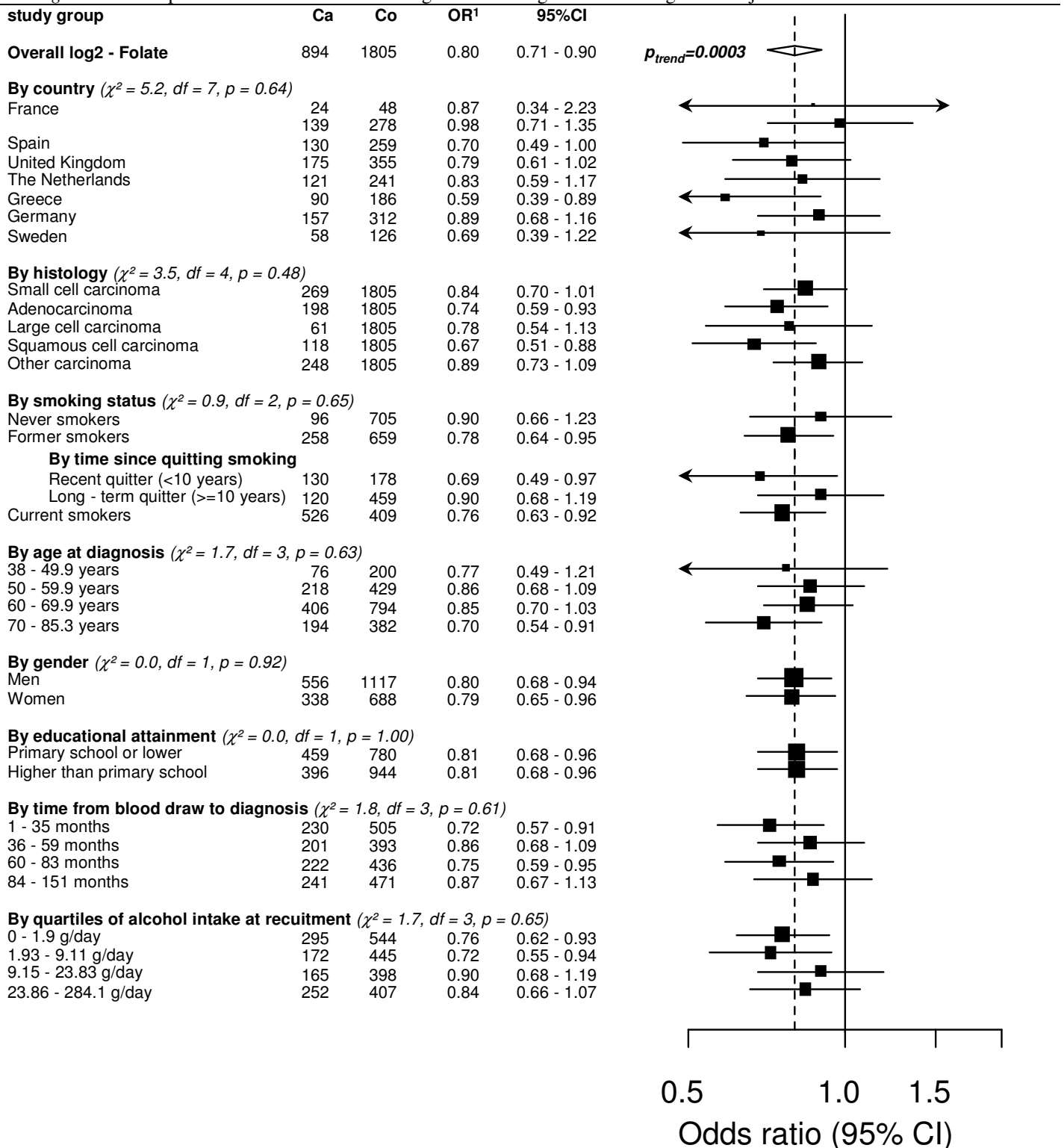


eFigure 3. Forest plot shows stratified ORs of lung cancer for log2- of circulating vitamin B2 (riboflavin) adjusted for cotinine



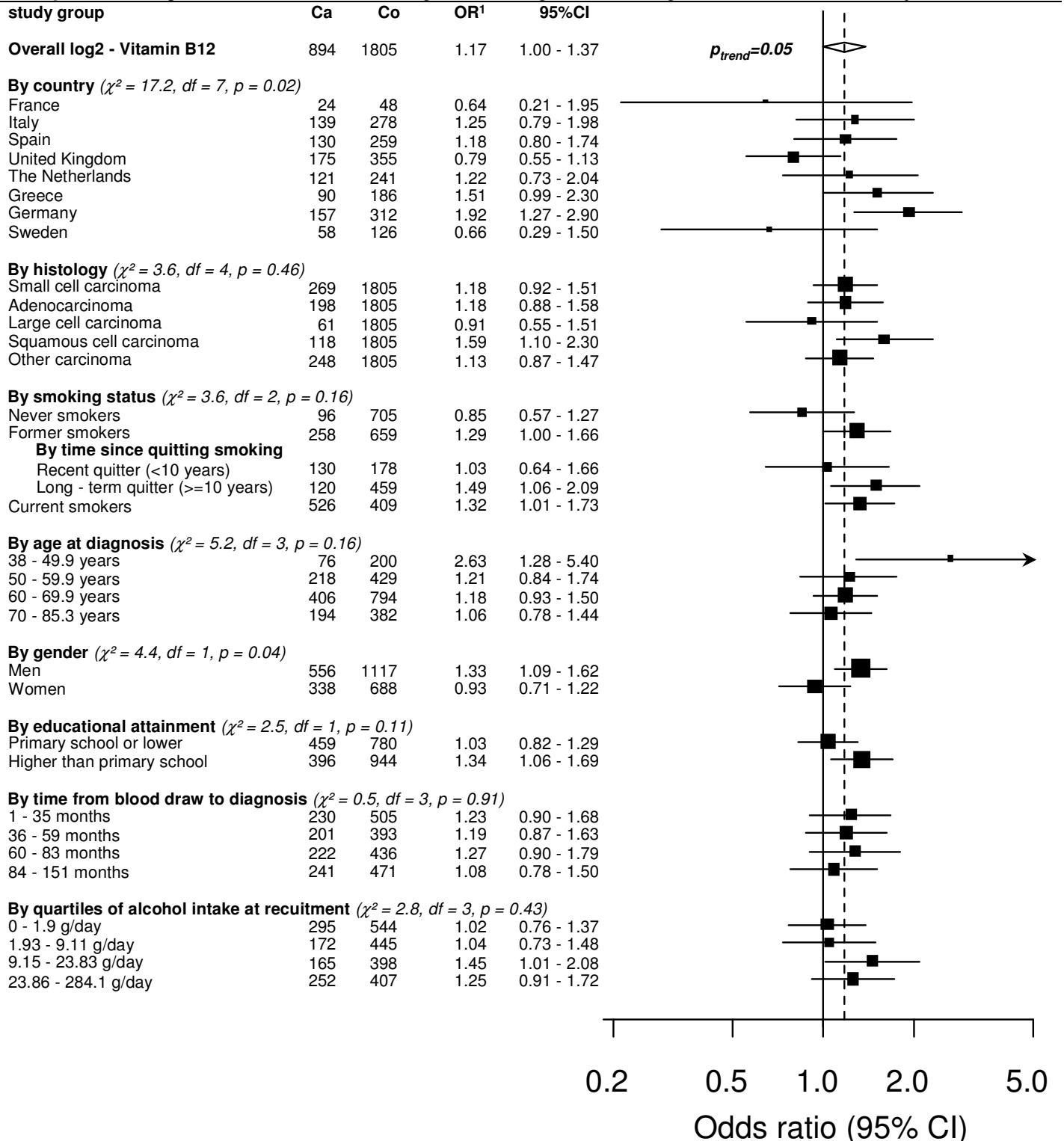
1) ORs were assessed by unconditional logistic regression, adjusted for age, sex, country and cotinine (in quartiles); the black squares and horizontal lines indicate the ORs and 95% CIs; the size of the black squares are proportional to the inverse variance of the logistic regression estimates

eFigure 4. Forest plot shows stratified ORs of lung cancer for log2- of circulating folate adjusted for cotinine



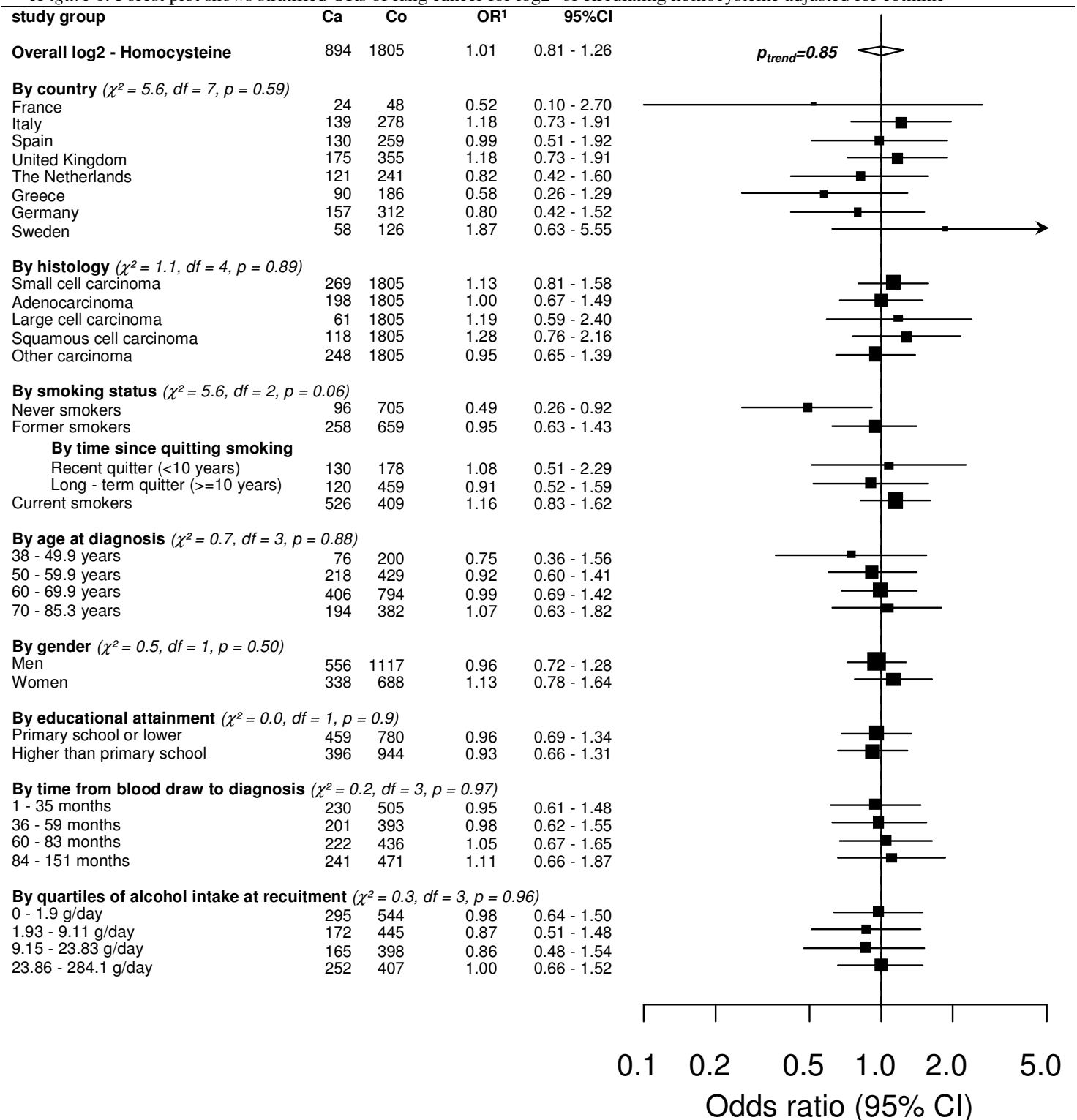
1) ORs were assessed by unconditional logistic regression, adjusted for age, sex, country and cotinine (in quartiles); the black squares and horizontal lines indicate the ORs and 95% CIs; the size of the black squares are proportional to the inverse variance of the logistic regression estimates

eFigure 5. Forest plot shows stratified ORs of lung cancer for log<sub>2</sub>- of circulating vitamin B12 (cobalamin) adjusted for cotinine



1) ORs were assessed by unconditional logistic regression, adjusted for age, sex, country and cotinine (in quartiles); the black squares and horizontal lines indicate the ORs and 95% CIs; the size of the black squares are proportional to the inverse variance of the logistic regression estimates

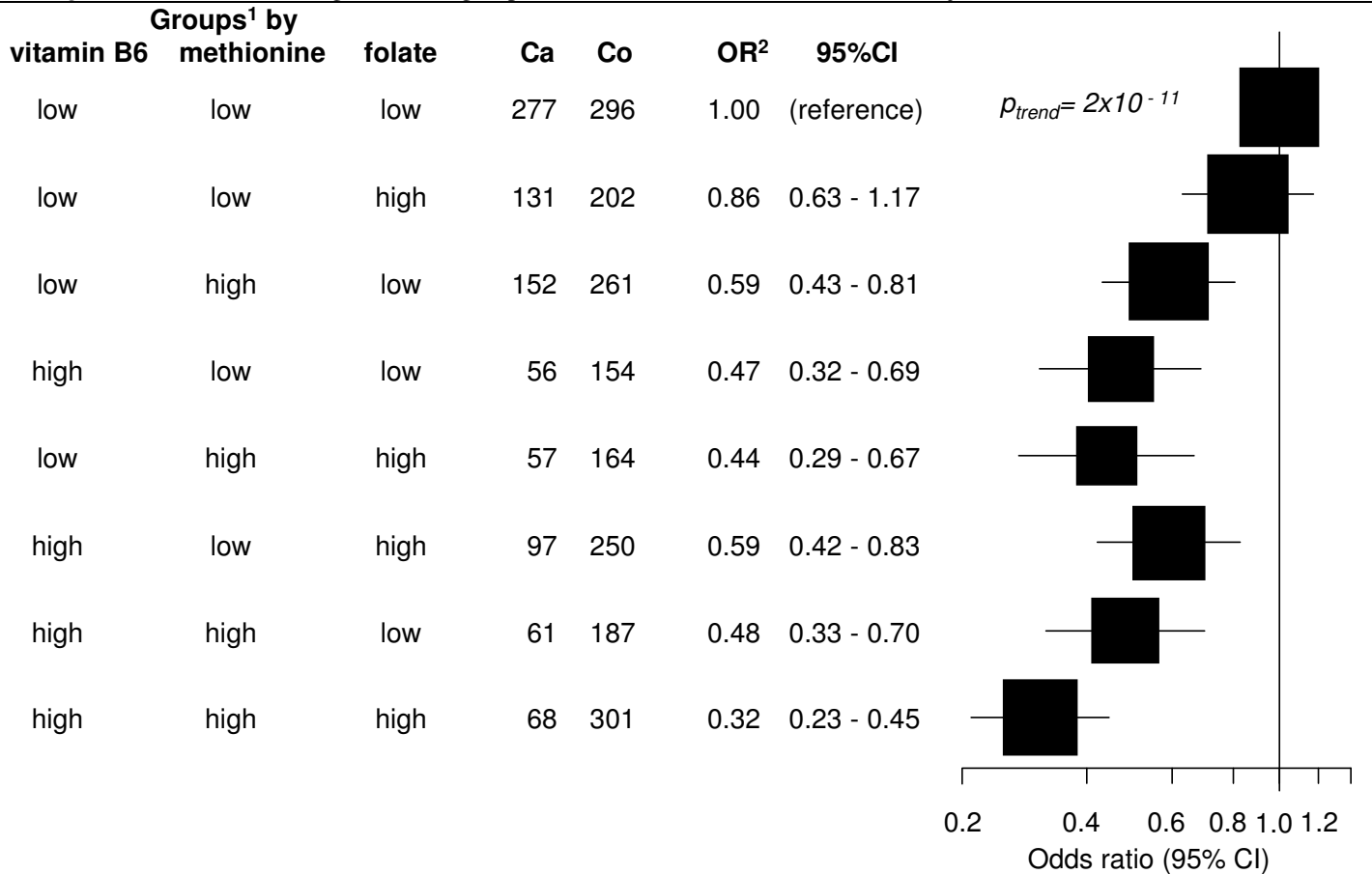
eFigure 6. Forest plot shows stratified ORs of lung cancer for log<sub>2</sub>- of circulating homocysteine adjusted for cotinine



1) ORs were assessed by unconditional logistic regression, adjusted for age, sex, country and cotinine (in quartiles); the black squares and horizontal lines indicate the ORs and 95% CIs; the size of the black squares are proportional to the inverse variance of the logistic regression estimates



eFigure 7. Odds ratios of lung cancer for groups of vitamin B6, methionine and folate adjusted for cotinine



1) high/low for vitamin B6 denotes levels above/below 29.1 nmol/L, high/low for methionine denotes levels above/below 40.3  $\mu$ mol/L, high/low for folate denotes levels above/below 14.4 nmol/L 2) ORs were assessed by unconditional logistic regression adjusting for age (in five year categories), country, sex and cotinine (in quartiles); p-trend was assessed by including a discrete covariate (0-3) indicating if one, two or three of the analytes are high; the black squares and horizontal lines indicate the ORs and 95% CIs; the size of the black squares are proportional to the inverse variance of the logistic regression estimates